

Product datasheet for **TA363811**

RNase L (RNASEL) Rabbit Polyclonal Antibody

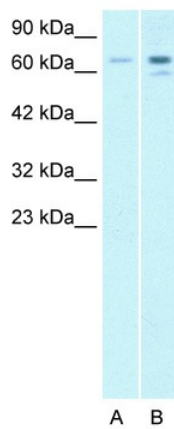
Product data:

Product Type:	Primary Antibodies
Applications:	WB
Reactivity:	Human
Host:	Rabbit
Clonality:	Polyclonal
Immunogen:	The immunogen is a synthetic peptide directed towards the C terminal region of human RNASEL
Specificity:	Expected reactivity: Cow, Dog, Horse, Human, Pig Homology: Cow: 78%; Dog: 92%; Horse: 100%; Human: 100%; Pig: 92%
Formulation:	Liquid. Purified antibody supplied in 1x PBS buffer with 0.09% (w/v) sodium azide and 2% sucrose.
Concentration:	lot specific
Purification:	Protein A purified
Conjugation:	Unconjugated
Storage:	For short term use, store at 2-8°C up to 1 week. For long term storage, store at -20°C in small aliquots to prevent freeze-thaw cycles.
Stability:	Shelf life: one year from despatch.
Predicted Protein Size:	84kDa
Gene Name:	ribonuclease L
Database Link:	NP_066956 Entrez Gene 6041 Human Q05823
Background:	This gene encodes a component of the interferon-regulated 2-5A system that functions in the antiviral and antiproliferative roles of interferons. Mutations in this gene have been associated with predisposition to prostate cancer and this gene is a candidate for the hereditary prostate cancer 1 (HPC1) allele.
Synonyms:	DKFZp781D08126; HPC1; MGC104972; MGC133329; PRCA1; RNS4
Protein Families:	Druggable Genome, Protein Kinase



[View online »](#)

Product images:



Rabbit Anti- RNASEL Antibody
 Catalog Number: AVARP09034
 Lot Number: QC0301
 Lane: A: 293T Cell Lysate
 B: HepG2 Cell Lysate
 Antibody Titration: 5.0µg/ml
 Gel Concentration: 12%

Host: Rabbit
 Target Name: RNASEL
 Sample Tissue: Human 293T Whole Cell
 Antibody Dilution: 1ug/ml