

## Product datasheet for **TA363808**

### Cyclin E2 (CCNE2) Rabbit Polyclonal Antibody

#### Product data:

Product Type:	Primary Antibodies
Applications:	WB
Reactivity:	Human
Host:	Rabbit
Clonality:	Polyclonal
Immunogen:	The immunogen is a synthetic peptide directed towards the N terminal region of human CCNE2
Specificity:	<b>Expected reactivity:</b> Cow, Guinea Pig, Horse, Human, Mouse, Pig, Rat <b>Homology:</b> Cow: 100%; Guinea Pig: 84%; Horse: 100%; Human: 100%; Mouse: 91%; Pig: 92%; Rat: 91%
Formulation:	Liquid. Purified antibody supplied in 1x PBS buffer with 0.09% (w/v) sodium azide and 2% sucrose. <i>Note that this product is shipped as lyophilized powder to China customers.</i>
Concentration:	lot specific
Purification:	Affinity Purified
Conjugation:	Unconjugated
Storage:	For short term use, store at 2-8°C up to 1 week. For long term storage, store at -20°C in small aliquots to prevent freeze-thaw cycles.
Stability:	Shelf life: one year from despatch.
Predicted Protein Size:	47kDa
Gene Name:	cyclin E2
Database Link:	<a href="#">NP_477097</a> <a href="#">Entrez Gene 9134 Human</a> <a href="#">O96020</a>
Background:	The protein encoded by this gene belongs to the highly conserved cyclin family, whose members are characterized by a dramatic periodicity in protein abundance through the cell cycle. Cyclins function as regulators of CDK kinases. Different cyclins exhibit
Synonyms:	CYCE2

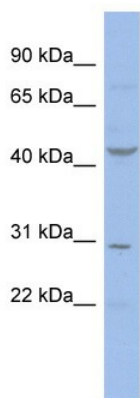


[View online »](#)

**Protein Families:** Druggable Genome

**Protein Pathways:** Cell cycle, Oocyte meiosis, p53 signaling pathway, Pathways in cancer, Prostate cancer, Small cell lung cancer

### Product images:



WB Suggested Anti-CCNE2 Antibody Titration:  
0.2-1 ug/ml  
ELISA Titer: 1:312500  
Positive Control: OVCAR-3 cell lysate  
CCNE2 is supported by BioGPS gene expression data to be expressed in OVCAR3