

Product datasheet for **TA363805**

14-3-3 epsilon (YWHAE) Rabbit Polyclonal Antibody

Product data:

Product Type:	Primary Antibodies
Applications:	WB
Reactivity:	Human
Host:	Rabbit
Clonality:	Polyclonal
Immunogen:	The immunogen is a synthetic peptide directed towards the middle region of human YWHAE
Specificity:	Expected reactivity: Dog, Guinea Pig, Mouse, Zebrafish Homology: Dog: 100%; Guinea Pig: 100%; Mouse: 100%; Zebrafish: 100%
Formulation:	Liquid. Purified antibody supplied in 1x PBS buffer with 0.09% (w/v) sodium azide and 2% sucrose. <i>Note that this product is shipped as lyophilized powder to China customers.</i>
Concentration:	lot specific
Purification:	Affinity Purified
Conjugation:	Unconjugated
Storage:	For short term use, store at 2-8°C up to 1 week. For long term storage, store at -20°C in small aliquots to prevent freeze-thaw cycles.
Stability:	Shelf life: one year from despatch.
Predicted Protein Size:	29kDa
Gene Name:	tyrosine 3-monooxygenase/tryptophan 5-monooxygenase activation protein epsilon
Database Link:	NP_006752 Entrez Gene 7531 Human P62258



[View online »](#)

Background:

YWHAE is an adapter protein implicated in the regulation of a large spectrum of both general and specialized signaling pathway. YWHAE binds to a large number of partners, usually by recognition of a phosphoserine or phosphothreonine motif. The binding generally results in the modulation of the activity of the binding partner. This gene product belongs to the 14-3-3 family of proteins which mediate signal transduction by binding to phosphoserine-containing proteins. This highly conserved protein family is found in both plants and mammals, and this protein is 100% identical to the mouse ortholog. It interacts with CDC25 phosphatases, RAF1 and IRS1 proteins, suggesting its role in diverse biochemical activities related to signal transduction, such as cell division and regulation of insulin sensitivity. It has also been implicated in the pathogenesis of small cell lung cancer. Publication Note: This RefSeq record includes a subset of the publications that are available for this gene. Please see the Entrez Gene record to access additional publications.

Synonyms:

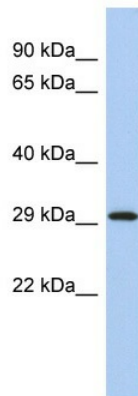
14-3-3E; FLJ45465; KCIP-1; MDCR; MDS

Protein Families:

Druggable Genome

Protein Pathways:

Cell cycle, Neurotrophin signaling pathway, Oocyte meiosis

Product images:

WB Suggested Anti-YWHAE Antibody Titration:
0.2-1 ug/ml
ELISA Titer: 1:12500
Positive Control: Human Spleen