

## Product datasheet for **TA363796**

### Hsph1 Rabbit Polyclonal Antibody

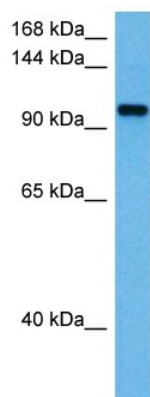
#### Product data:

Product Type:	Primary Antibodies
Applications:	WB
Reactivity:	Mouse
Host:	Rabbit
Clonality:	Polyclonal
Immunogen:	The immunogen is a synthetic peptide directed towards the middle region of mouse HSPH1
Specificity:	<b>Expected reactivity:</b> Mouse
Formulation:	Liquid. Purified antibody supplied in 1x PBS buffer with 0.09% (w/v) sodium azide and 2% sucrose. <i>Note that this product is shipped as lyophilized powder to China customers.</i>
Concentration:	lot specific
Purification:	Affinity purified
Conjugation:	Unconjugated
Storage:	For short term use, store at 2-8°C up to 1 week. For long term storage, store at -20°C in small aliquots to prevent freeze-thaw cycles.
Stability:	Shelf life: one year from despatch.
Predicted Protein Size:	96 kDa
Gene Name:	heat shock 105kDa/110kDa protein 1
Database Link:	<a href="#">NP_001334463.1</a> <a href="#">Entrez Gene 15505 Mouse</a> <a href="#">Q61699</a>
Background:	Acts as a nucleotide-exchange factor (NEF) for chaperone proteins HSPA1A and HSPA1B, promoting the release of ADP from HSPA1A/B thereby triggering client/substrate protein release (By similarity). Prevents the aggregation of denatured proteins in cells under severe stress, on which the ATP levels decrease markedly. Inhibits HSPA8/HSC70 ATPase and chaperone activities.
Synonyms:	DKFZp686M05240; HSP105; HSP105A; HSP105B; HSP110; KIAA0201; NY-CO-25



[View online »](#)

## Product images:



Host: Rabbit  
Target Name: Hsph1  
Sample Type: Mouse Brain Lysate  
Antibody Dilution: 1.0 $\mu$ g/ml

Host: Rabbit  
Target Name: HSPH1  
Sample Tissue: Mouse Brain lysates  
Antibody Dilution: 1 ug/ml