

## Product datasheet for **TA363791**

### MCM5 Rabbit Polyclonal Antibody

#### Product data:

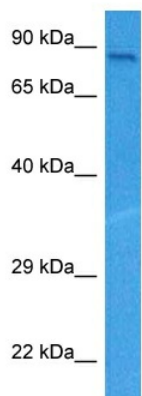
Product Type:	Primary Antibodies
Applications:	WB
Reactivity:	Human
Host:	Rabbit
Clonality:	Polyclonal
Immunogen:	The immunogen is a synthetic peptide directed towards the middle region of human MCM5
Specificity:	<b>Expected reactivity:</b> Human
Formulation:	Liquid. Purified antibody supplied in 1x PBS buffer with 0.09% (w/v) sodium azide and 2% sucrose. <i>Note that this product is shipped as lyophilized powder to China customers.</i>
Concentration:	lot specific
Purification:	Affinity purified
Conjugation:	Unconjugated
Storage:	For short term use, store at 2-8°C up to 1 week. For long term storage, store at -20°C in small aliquots to prevent freeze-thaw cycles.
Stability:	Shelf life: one year from despatch.
Predicted Protein Size:	82 kDa
Gene Name:	minichromosome maintenance complex component 5
Database Link:	<a href="#">NP_006730.2</a> <a href="#">Entrez Gene 4174 Human</a> <a href="#">P33992</a>
Background:	The protein encoded by this gene is structurally very similar to the CDC46 protein from <i>S. cerevisiae</i> , a protein involved in the initiation of DNA replication. The encoded protein is a member of the MCM family of chromatin-binding proteins and can interact with at least two other members of this family. The encoded protein is upregulated in the transition from the G0 to G1/S phase of the cell cycle and may actively participate in cell cycle regulation.
Synonyms:	CDC46; MGC5315; P1-CDC46
Protein Families:	Stem cell - Pluripotency, Transcription Factors



[View online »](#)

Protein Pathways: Cell cycle, DNA replication

### Product images:



Host: Rabbit  
Target Name: MCM5  
Sample Type: HepG2 Cell Lysate  
Antibody Dilution: 1.0 $\mu$ g/ml

Host: Rabbit  
Target Name: MCM5  
Sample Tissue: Human HepG2 Whole Cell lysates  
Antibody Dilution: 1  $\mu$ g/ml