

Product datasheet for **TA363786**

PHOX2B Rabbit Polyclonal Antibody

Product data:

Product Type:	Primary Antibodies
Applications:	WB
Reactivity:	Human
Host:	Rabbit
Clonality:	Polyclonal
Immunogen:	The immunogen is a synthetic peptide directed towards the middle region of human PHOX2B
Specificity:	Expected reactivity: Human
Formulation:	Liquid. Purified antibody supplied in 1x PBS buffer with 0.09% (w/v) sodium azide and 2% sucrose. <i>Note that this product is shipped as lyophilized powder to China customers.</i>
Concentration:	lot specific
Purification:	Affinity purified
Conjugation:	Unconjugated
Storage:	For short term use, store at 2-8°C up to 1 week. For long term storage, store at -20°C in small aliquots to prevent freeze-thaw cycles.
Stability:	Shelf life: one year from despatch.
Predicted Protein Size:	34 kDa
Gene Name:	paired like homeobox 2b
Database Link:	NP_003915.2 Entrez Gene 8929 Human Q99453



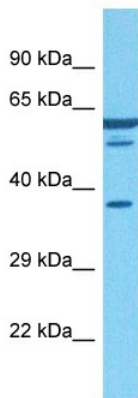
[View online »](#)

Background:

The DNA-associated protein encoded by this gene is a member of the paired family of homeobox proteins localized to the nucleus. The protein functions as a transcription factor involved in the development of several major noradrenergic neuron populations and the determination of neurotransmitter phenotype. The gene product is linked to enhancement of second messenger-mediated activation of the dopamine beta-hydroxylase, c-fos promoters and several enhancers, including cyclic amp-response element and serum-response element. Expansion of a 20 amino acid polyalanine tract in this protein by 5-13 aa has been associated with congenital central hypoventilation syndrome.

Synonyms:

NBLST2; NBPhox; PMX2B

Product images:

Host: Rabbit
Target Name: PHOX2B
Sample Type: THP-1 Cell Lysate
Antibody Dilution: 1.0µg/ml

Host: Rabbit
Target Name: PHOX2B
Sample Tissue: Human THP-1 Whole Cell lysates
Antibody Dilution: 1ug/ml