

## Product datasheet for **TA363784**

### Pde7b Rabbit Polyclonal Antibody

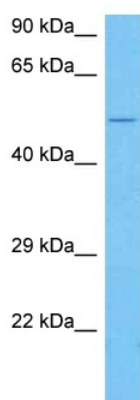
#### Product data:

Product Type:	Primary Antibodies
Applications:	WB
Reactivity:	Mouse
Host:	Rabbit
Clonality:	Polyclonal
Immunogen:	The immunogen is a synthetic peptide directed towards the C terminal region of mouse PDE7B
Specificity:	<b>Expected reactivity:</b> Mouse
Formulation:	Liquid. Purified antibody supplied in 1x PBS buffer with 0.09% (w/v) sodium azide and 2% sucrose.
Concentration:	lot specific
Purification:	Affinity purified
Conjugation:	Unconjugated
Storage:	For short term use, store at 2-8°C up to 1 week. For long term storage, store at -20°C in small aliquots to prevent freeze-thaw cycles.
Stability:	Shelf life: one year from despatch.
Predicted Protein Size:	51 kDa
Gene Name:	phosphodiesterase 7B
Database Link:	<a href="#">NP_001334295.1</a> <a href="#">Entrez Gene 29863 Mouse</a> <a href="#">Q9QXQ1</a>
Background:	Hydrolyzes the second messenger cAMP, which is a key regulator of many important physiological processes. May be involved in the control of cAMP-mediated neural activity and cAMP metabolism in the brain.
Synonyms:	bA472E5.1; MGC88256



[View online »](#)

## Product images:



Host: Rabbit  
Target Name: Pde7b  
Sample Type: Mouse Liver Lysate  
Antibody Dilution: 1.0 $\mu$ g/ml

Host: Rabbit  
Target Name: PDE7B  
Sample Tissue: Mouse Liver lysates  
Antibody Dilution: 1 $\mu$ g/ml