

Product datasheet for **TA363765**

IL6ra Rabbit Polyclonal Antibody

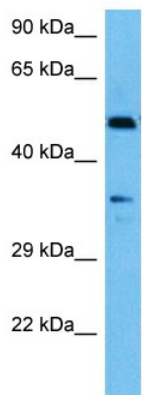
Product data:

Product Type:	Primary Antibodies
Applications:	WB
Reactivity:	Mouse
Host:	Rabbit
Clonality:	Polyclonal
Immunogen:	The immunogen is a synthetic peptide directed towards the C terminal region of mouse IL6RA
Specificity:	Expected reactivity: Mouse
Formulation:	Liquid. Purified antibody supplied in 1x PBS buffer with 0.09% (w/v) sodium azide and 2% sucrose.
Concentration:	lot specific
Purification:	Affinity purified
Conjugation:	Unconjugated
Storage:	For short term use, store at 2-8°C up to 1 week. For long term storage, store at -20°C in small aliquots to prevent freeze-thaw cycles.
Stability:	Shelf life: one year from despatch.
Predicted Protein Size:	50 kDa
Gene Name:	interleukin 6 receptor, alpha
Database Link:	NP_034689.2 Entrez Gene 16194 Mouse P22272
Background:	Part of the receptor for interleukin 6. Binds to IL6 with low affinity, but does not transduce a signal. Signal activation necessitate an association with IL6ST. Activation may lead to the regulation of the immune response, acute-phase reactions and hematopoiesis.
Synonyms:	CD126; IL-6R; Il6r



[View online »](#)

Product images:



Host: Rabbit
Target Name: IL6ra
Sample Type: Mouse Liver Lysate
Antibody Dilution: 1.0 μ g/ml

Host: Rabbit
Target Name: IL6RA
Sample Tissue: Mouse Liver lysates
Antibody Dilution: 1 μ g/ml