

Product datasheet for **TA363764**

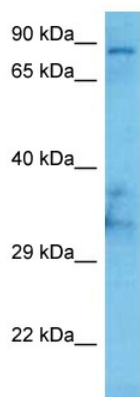
SLC26A6 Rabbit Polyclonal Antibody

Product data:

Product Type:	Primary Antibodies
Applications:	WB
Reactivity:	Human
Host:	Rabbit
Clonality:	Polyclonal
Immunogen:	The immunogen is a synthetic peptide directed towards the middle region of human SLC26A6
Specificity:	Expected reactivity: Human
Formulation:	Liquid. Purified antibody supplied in 1x PBS buffer with 0.09% (w/v) sodium azide and 2% sucrose. <i>Note that this product is shipped as lyophilized powder to China customers.</i>
Concentration:	lot specific
Purification:	Affinity purified
Conjugation:	Unconjugated
Storage:	For short term use, store at 2-8°C up to 1 week. For long term storage, store at -20°C in small aliquots to prevent freeze-thaw cycles.
Stability:	Shelf life: one year from despatch.
Predicted Protein Size:	83 kDa
Gene Name:	solute carrier family 26 member 6
Database Link:	NP_001035544.1 Entrez Gene 65010 Human Q9BXS9
Background:	This gene belongs to the solute carrier 26 family, whose members encode anion transporter proteins. This particular family member encodes a protein involved in transporting chloride, oxalate, sulfate and bicarbonate. Alternatively spliced transcript variants encoding distinct isoforms have been described.
Synonyms:	DKFZp586E1422; Pendrin-L1
Protein Families:	Transmembrane



[View online »](#)

Product images:

Host: Rabbit
Target Name: SLC26A6
Sample Type: A172 Cell Lysate
Antibody Dilution: 1.0 μ g/ml

Host: Rabbit
Target Name: SLC26A6
Sample Tissue: Human A172 Whole Cell lysates
Antibody Dilution: 1 μ g/ml