

## Product datasheet for TA363762

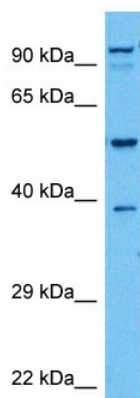
### Cyp3a25 Rabbit Polyclonal Antibody

#### Product data:

Product Type:	Primary Antibodies
Applications:	WB
Reactivity:	Mouse
Host:	Rabbit
Clonality:	Polyclonal
Immunogen:	The immunogen is a synthetic peptide directed towards the N terminal region of mouse CYP3A11
Specificity:	<b>Expected reactivity:</b> Mouse
Formulation:	Liquid. Purified antibody supplied in 1x PBS buffer with 0.09% (w/v) sodium azide and 2% sucrose.
Concentration:	lot specific
Purification:	Affinity purified
Conjugation:	Unconjugated
Storage:	For short term use, store at 2-8°C up to 1 week. For long term storage, store at -20°C in small aliquots to prevent freeze-thaw cycles.
Stability:	Shelf life: one year from despatch.
Predicted Protein Size:	55 kDa
Gene Name:	cytochrome P450, family 3, subfamily a, polypeptide 25
Database Link:	<a href="#">NP_062766.2</a> <a href="#">Entrez Gene 56388 Mouse</a> <a href="#">O09158</a>
Synonyms:	AI327008



## Product images:



Host: Rabbit  
Target Name: Cyp3a11  
Sample Type: Mouse Thymus Lysate  
Antibody Dilution: 1.0µg/ml

Host: Rabbit  
Target Name: CYP3A11  
Sample Tissue: Mouse Thymus lysates  
Antibody Dilution: 1ug/ml