

Product datasheet for **TA363761**

AGFG1 Rabbit Polyclonal Antibody

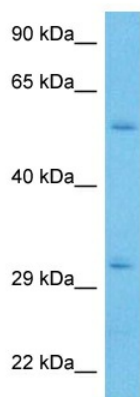
Product data:

Product Type:	Primary Antibodies
Applications:	WB
Reactivity:	Human
Host:	Rabbit
Clonality:	Polyclonal
Immunogen:	The immunogen is a synthetic peptide directed towards the C terminal region of human HRB
Specificity:	Expected reactivity: Human
Formulation:	Liquid. Purified antibody supplied in 1x PBS buffer with 0.09% (w/v) sodium azide and 2% sucrose. <i>Note that this product is shipped as lyophilized powder to China customers.</i>
Concentration:	lot specific
Purification:	Affinity purified
Conjugation:	Unconjugated
Storage:	For short term use, store at 2-8°C up to 1 week. For long term storage, store at -20°C in small aliquots to prevent freeze-thaw cycles.
Stability:	Shelf life: one year from despatch.
Predicted Protein Size:	57 kDa
Gene Name:	ArfGAP with FG repeats 1
Database Link:	NP_001128659.1 Entrez Gene 3267 Human P52594-2
Background:	The protein encoded by this gene is related to nucleoporins, a class of proteins that mediate nucleocytoplasmic transport. The encoded protein binds the activation domain of the human immunodeficiency virus Rev protein when Rev is assembled onto its RNA target, and is required for the nuclear export of Rev-directed RNAs. Multiple transcript variants encoding different isoforms have been found for this gene.
Synonyms:	DKFZp686115205; HRB; MGC116938; MGC116940; OTTHUMP00000204062; RAB; RIP



[View online »](#)

Product images:



Host: Rabbit
Target Name: HRB
Sample Type: 786-0 Cell Lysate
Antibody Dilution: 1.0 μ g/ml

Host: Rabbit
Target Name: HRB
Sample Tissue: Human 786-0 Whole Cell lysates
Antibody Dilution: 1 ug/ml