

Product datasheet for **TA363754**

Salivary alpha amylase (AMY1A) Rabbit Polyclonal Antibody

Product data:

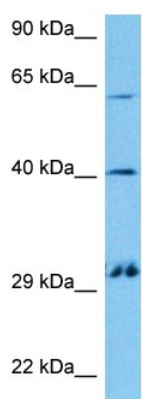
Product Type:	Primary Antibodies
Applications:	WB
Reactivity:	Human
Host:	Rabbit
Clonality:	Polyclonal
Immunogen:	The immunogen is a synthetic peptide directed towards the middle region of human AMY1A
Specificity:	Expected reactivity: Human
Formulation:	Liquid. Purified antibody supplied in 1x PBS buffer with 0.09% (w/v) sodium azide and 2% sucrose. <i>Note that this product is shipped as lyophilized powder to China customers.</i>
Concentration:	lot specific
Purification:	Affinity purified
Conjugation:	Unconjugated
Storage:	For short term use, store at 2-8°C up to 1 week. For long term storage, store at -20°C in small aliquots to prevent freeze-thaw cycles.
Stability:	Shelf life: one year from despatch.
Predicted Protein Size:	58 kDa
Gene Name:	amylase, alpha 1A (salivary)
Database Link:	NP_001008219.1 Entrez Gene 277 Human Entrez Gene 276 Human P04746
Background:	Amylases are secreted proteins that hydrolyze 1,4-alpha-glucoside bonds in oligosaccharides and polysaccharides, and thus catalyze the first step in digestion of dietary starch and glycogen. The human genome has a cluster of several amylase genes that are expressed at high levels in either salivary gland or pancreas. This gene encodes an amylase isoenzyme produced by the salivary gland. Alternative splicing results in multiple transcript variants encoding the same protein.
Synonyms:	alpha-amylase; AMY1; AMY1B; glycogenase



[View online »](#)

Protein Pathways: Metabolic pathways, Starch and sucrose metabolism

Product images:



Host: Rabbit
Target Name: AMY1A
Sample Type: HT1080 Cell Lysate
Antibody Dilution: 1.0 μ g/ml

Host: Rabbit
Target Name: AMY1A
Sample Tissue: Human HT1080 Whole Cell lysates
Antibody Dilution: 1 μ g/ml