

## Product datasheet for **TA363751**

### **BACH1 Rabbit Polyclonal Antibody**

#### **Product data:**

Product Type:	Primary Antibodies
Applications:	WB
Reactivity:	Human
Host:	Rabbit
Clonality:	Polyclonal
Immunogen:	The immunogen is a synthetic peptide directed towards the middle region of human BACH1
Specificity:	<b>Expected reactivity:</b> Human
Formulation:	Liquid. Purified antibody supplied in 1x PBS buffer with 0.09% (w/v) sodium azide and 2% sucrose. <i>Note that this product is shipped as lyophilized powder to China customers.</i>
Concentration:	lot specific
Purification:	Affinity purified
Conjugation:	Unconjugated
Storage:	For short term use, store at 2-8°C up to 1 week. For long term storage, store at -20°C in small aliquots to prevent freeze-thaw cycles.
Stability:	Shelf life: one year from despatch.
Predicted Protein Size:	82 kDa
Gene Name:	BTB domain and CNC homolog 1
Database Link:	<a href="#">NP_001177.1</a> <a href="#">Entrez Gene 571 Human</a> <a href="#">O14867</a>



[View online »](#)

**Background:**

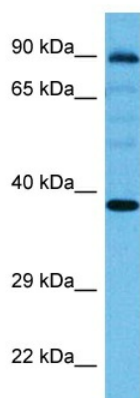
This gene encodes a transcription factor that belongs to the cap'n'collar type of basic region leucine zipper factor family (CNC-bZip). The encoded protein contains broad complex, tramtrack, bric-a-brac/poxvirus and zinc finger (BTB/POZ) domains, which is atypical of CNC-bZip family members. These BTB/POZ domains facilitate protein-protein interactions and formation of homo- and/or hetero-oligomers. When this encoded protein forms a heterodimer with MafK, it functions as a repressor of Maf recognition element (MARE) and transcription is repressed. Multiple alternatively spliced transcript variants have been identified for this gene.

**Synonyms:**

BACH-1; HA2303

**Protein Families:**

Transcription Factors

**Product images:**


Host: Rabbit  
Target Name: BACH1  
Sample Type: COLO205 Cell Lysate  
Antibody Dilution: 1.0µg/ml

Host: Rabbit  
Target Name: BACH1  
Sample Tissue: Human COLO205 Whole Cell lysates  
Antibody Dilution: 1ug/ml