

Product datasheet for **TA363741**

CHIT1 Rabbit Polyclonal Antibody

Product data:

Product Type:	Primary Antibodies
Applications:	WB
Reactivity:	Human
Host:	Rabbit
Clonality:	Polyclonal
Immunogen:	The immunogen is a synthetic peptide directed towards the middle region of human CHIT1
Specificity:	Expected reactivity: Human
Formulation:	Liquid. Purified antibody supplied in 1x PBS buffer with 0.09% (w/v) sodium azide and 2% sucrose. <i>Note that this product is shipped as lyophilized powder to China customers.</i>
Concentration:	lot specific
Purification:	Affinity purified
Conjugation:	Unconjugated
Storage:	For short term use, store at 2-8°C up to 1 week. For long term storage, store at -20°C in small aliquots to prevent freeze-thaw cycles.
Stability:	Shelf life: one year from despatch.
Predicted Protein Size:	51 kDa
Gene Name:	chitinase 1
Database Link:	NP_001243054.2 Entrez Gene 1118 Human Q13231
Background:	Chitotriosidase is secreted by activated human macrophages and is markedly elevated in plasma of Gaucher disease patients. The expression of chitotriosidase occurs only at a late stage of differentiation of monocytes to activated macrophages in culture. Human macrophages can synthesize a functional chitotriosidase, a highly conserved enzyme with a strongly regulated expression. This enzyme may play a role in the degradation of chitin-containing pathogens. Several alternatively spliced transcript variants have been described for this gene.



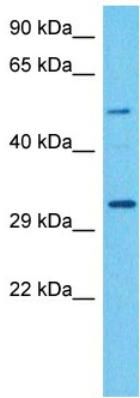
[View online »](#)

Synonyms: CHI3; CHIT; Chitinase-1; chitotriosidase; FLJ00314; MGC125322

Protein Families: Secreted Protein, Transmembrane

Protein Pathways: Amino sugar and nucleotide sugar metabolism

Product images:



Host: Rabbit
 Target Name: CHIT1
 Sample Type: 786-0 Cell Lysate
 Antibody Dilution: 1.0µg/ml

Host: Rabbit
 Target Name: CHIT1
 Sample Tissue: Human 786-0 Whole Cell lysates
 Antibody Dilution: 1ug/ml