

Product datasheet for **TA363740**

Casp1 Rabbit Polyclonal Antibody

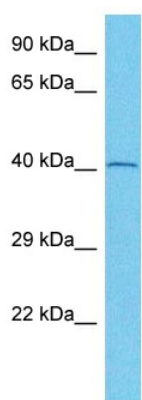
Product data:

| | |
|-------------------------|---|
| Product Type: | Primary Antibodies |
| Applications: | WB |
| Reactivity: | Mouse |
| Host: | Rabbit |
| Clonality: | Polyclonal |
| Immunogen: | The immunogen is a synthetic peptide directed towards the middle region of mouse CASP1 |
| Specificity: | Expected reactivity: Mouse |
| Formulation: | Liquid. Purified antibody supplied in 1x PBS buffer with 0.09% (w/v) sodium azide and 2% sucrose. <i>Note that this product is shipped as lyophilized powder to China customers.</i> |
| Concentration: | lot specific |
| Purification: | Affinity purified |
| Conjugation: | Unconjugated |
| Storage: | For short term use, store at 2-8°C up to 1 week. For long term storage, store at -20°C in small aliquots to prevent freeze-thaw cycles. |
| Stability: | Shelf life: one year from despatch. |
| Predicted Protein Size: | 44 kDa |
| Gene Name: | caspase 1 |
| Database Link: | NP_033937.2 Entrez Gene 12362 Mouse P29452 |
| Background: | Thiol protease that cleaves IL-1 beta between an Asp and an Ala, releasing the mature cytokine which is involved in a variety of inflammatory processes. Important for defense against pathogens. Cleaves and activates sterol regulatory element binding proteins (SREBPs). Can also promote apoptosis (By similarity). Upon inflammasome activation, during DNA virus infection but not RNA virus challenge, controls antiviral immunity through the cleavage of CGAS, rendering it inactive. |
| Synonyms: | CASP-1; caspase-1; ICE; IL-1BC; IL1B-convertase; IL1BC; IL1BCE; p45 |



[View online »](#)

Product images:



Host: Rabbit
Target Name: Casp1
Sample Type: Mouse Small Intestine Lysate
Antibody Dilution: 1.0µg/ml

Host: Rabbit
Target Name: CASP1
Sample Tissue: Mouse Small Intestine lysates
Antibody Dilution: 1ug/ml