

Product datasheet for **TA363738**

Itgax Rabbit Polyclonal Antibody

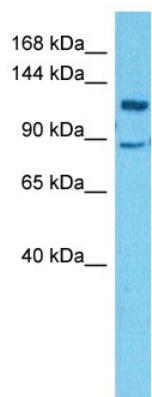
Product data:

Product Type:	Primary Antibodies
Applications:	WB
Reactivity:	Mouse
Host:	Rabbit
Clonality:	Polyclonal
Immunogen:	The immunogen is a synthetic peptide directed towards the N terminal region of mouse ITGAX
Specificity:	Expected reactivity: Mouse
Formulation:	Liquid. Purified antibody supplied in 1x PBS buffer with 0.09% (w/v) sodium azide and 2% sucrose. <i>Note that this product is shipped as lyophilized powder to China customers.</i>
Concentration:	lot specific
Purification:	Affinity purified
Conjugation:	Unconjugated
Storage:	For short term use, store at 2-8°C up to 1 week. For long term storage, store at -20°C in small aliquots to prevent freeze-thaw cycles.
Stability:	Shelf life: one year from despatch.
Predicted Protein Size:	128 kDa
Gene Name:	integrin alpha X
Database Link:	NP_067309.1 Entrez Gene 16411 Mouse Q9QXH4
Background:	Integrin alpha-X/beta-2 is a receptor for fibrinogen. It recognizes the sequence G-P-R in fibrinogen. It mediates cell-cell interaction during inflammatory responses. It is especially important in monocyte adhesion and chemotaxis (By similarity).
Synonyms:	CD11C; SLEB6



[View online »](#)

Product images:



Host: Rabbit
Target Name: Itgax
Sample Type: Mouse Lung Lysate
Antibody Dilution: 1.0µg/ml

Host: Rabbit
Target Name: ITGAX
Sample Tissue: Mouse Lung lysates
Antibody Dilution: 1 ug/ml