

## Product datasheet for **TA363733**

### GC1q R (C1QBP) Rabbit Polyclonal Antibody

#### Product data:

<b>Product Type:</b>	Primary Antibodies
<b>Applications:</b>	WB
<b>Reactivity:</b>	Human
<b>Host:</b>	Rabbit
<b>Clonality:</b>	Polyclonal
<b>Immunogen:</b>	The immunogen is a synthetic peptide directed towards the middle region of human C1QBP
<b>Specificity:</b>	<b>Expected reactivity:</b> Human
<b>Formulation:</b>	Liquid. Purified antibody supplied in 1x PBS buffer with 0.09% (w/v) sodium azide and 2% sucrose. <i>Note that this product is shipped as lyophilized powder to China customers.</i>
<b>Concentration:</b>	lot specific
<b>Purification:</b>	Affinity purified
<b>Conjugation:</b>	Unconjugated
<b>Storage:</b>	For short term use, store at 2-8°C up to 1 week. For long term storage, store at -20°C in small aliquots to prevent freeze-thaw cycles.
<b>Stability:</b>	Shelf life: one year from despatch.
<b>Predicted Protein Size:</b>	31 kDa
<b>Gene Name:</b>	complement component 1, q subcomponent binding protein
<b>Database Link:</b>	<a href="#">NP_001203.1</a> <a href="#">Entrez Gene 708 Human</a> <a href="#">Q07021</a>

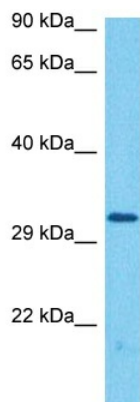


**Background:**

The human complement subcomponent C1q associates with C1r and C1s in order to yield the first component of the serum complement system. The protein encoded by this gene is known to bind to the globular heads of C1q molecules and inhibit C1 activation. This protein has also been identified as the p32 subunit of pre-mRNA splicing factor SF2, as well as a hyaluronic acid-binding protein.

**Synonyms:**

gC1Q-R; GC1QBP; gC1qR; HABP1; p32; p33; SF2p32

**Product images:**


Host: Rabbit

Target Name: C1QBP

Sample Type: Jurkat Cell Lysate

Antibody Dilution: 1.0 µg/ml

Host: Rabbit

Target Name: C1QBP

Sample Tissue: Human Jurkat Whole Cell lysates

Antibody Dilution: 1 µg/ml