

Product datasheet for **TA363730**

RPB2 (POLR2B) Rabbit Polyclonal Antibody

Product data:

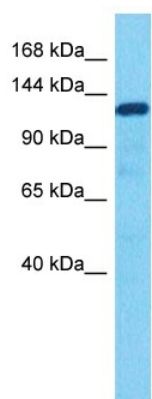
Product Type:	Primary Antibodies
Applications:	WB
Reactivity:	Human
Host:	Rabbit
Clonality:	Polyclonal
Immunogen:	The immunogen is a synthetic peptide directed towards the middle region of human POLR2B
Specificity:	Expected reactivity: Human
Formulation:	Liquid. Purified antibody supplied in 1x PBS buffer with 0.09% (w/v) sodium azide and 2% sucrose. <i>Note that this product is shipped as lyophilized powder to China customers.</i>
Concentration:	lot specific
Purification:	Affinity purified
Conjugation:	Unconjugated
Storage:	For short term use, store at 2-8°C up to 1 week. For long term storage, store at -20°C in small aliquots to prevent freeze-thaw cycles.
Stability:	Shelf life: one year from despatch.
Predicted Protein Size:	134 kDa
Gene Name:	polymerase (RNA) II subunit B
Database Link:	NP_000929.1 Entrez Gene 5431 Human P30876
Background:	This gene encodes the second largest subunit of RNA polymerase II (Pol II), a DNA-dependent RNA polymerase that catalyzes the transcription of DNA into precursors of mRNA, snRNA and microRNA. This subunit and the largest subunit form opposite sides of the center cleft of Pol II. Deletion of the flap loop region of this subunit results in a decrease in the rate of transcriptional elongation. Alternative splicing results in multiple transcript variants.
Synonyms:	hRPB140; hsRPB2; OTTHUMP00000158973; POL2RB; RPB2
Protein Families:	Transcription Factors



[View online »](#)

Protein Pathways: Huntington's disease, Metabolic pathways, Purine metabolism, Pyrimidine metabolism, RNA polymerase

Product images:



Host: Rabbit
Target Name: POLR2B
Sample Type: HeLa Cell Lysate
Antibody Dilution: 1.0µg/ml

Host: Rabbit
Target Name: POLR2B
Sample Tissue: Human HeLa Whole Cell lysates
Antibody Dilution: 1ug/ml