

Product datasheet for **TA363724**

DAB2 Rabbit Polyclonal Antibody

Product data:

Product Type:	Primary Antibodies
Applications:	WB
Reactivity:	Human
Host:	Rabbit
Clonality:	Polyclonal
Immunogen:	The immunogen is a synthetic peptide directed towards the C terminal region of human DAB2
Specificity:	Expected reactivity: Human
Formulation:	Liquid. Purified antibody supplied in 1x PBS buffer with 0.09% (w/v) sodium azide and 2% sucrose. <i>Note that this product is shipped as lyophilized powder to China customers.</i>
Concentration:	lot specific
Purification:	Affinity purified
Conjugation:	Unconjugated
Storage:	For short term use, store at 2-8°C up to 1 week. For long term storage, store at -20°C in small aliquots to prevent freeze-thaw cycles.
Stability:	Shelf life: one year from despatch.
Predicted Protein Size:	60 kDa
Gene Name:	DAB2, clathrin adaptor protein
Database Link:	NP_001231800.1 Entrez Gene 1601 Human P98082-2



[View online »](#)

Background:

This gene encodes a mitogen-responsive phosphoprotein. It is expressed in normal ovarian epithelial cells, but is down-regulated or absent from ovarian carcinoma cell lines, suggesting its role as a tumor suppressor. This protein binds to the SH3 domains of GRB2, an adaptor protein that couples tyrosine kinase receptors to SOS (a guanine nucleotide exchange factor for Ras), via its C-terminal proline-rich sequences, and may thus modulate growth factor/Ras pathways by competing with SOS for binding to GRB2. Alternatively spliced transcript variants encoding different isoforms have been found for this gene.

Synonyms:

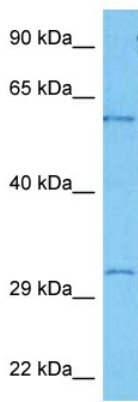
DOC-2; DOC2; FLJ26626

Protein Families:

Druggable Genome

Protein Pathways:

Endocytosis

Product images:

Host: Rabbit
Target Name: DAB2
Sample Type: U937 Cell Lysate
Antibody Dilution: 1.0µg/ml

Host: Rabbit
Target Name: DAB2
Sample Tissue: Human U937 Whole Cell lysates
Antibody Dilution: 1ug/ml