

## Product datasheet for TA363721

### Cdkn2a Rabbit Polyclonal Antibody

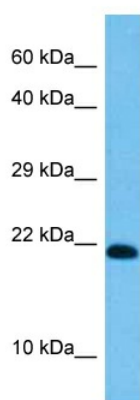
#### Product data:

Product Type:	Primary Antibodies
Applications:	WB
Reactivity:	Rat
Host:	Rabbit
Clonality:	Polyclonal
Immunogen:	The immunogen is a synthetic peptide directed towards the middle region of rat CDKN2A
Specificity:	<b>Expected reactivity:</b> Rat
Formulation:	Liquid. Purified antibody supplied in 1x PBS buffer with 0.09% (w/v) sodium azide and 2% sucrose. <i>Note that this product is shipped as lyophilized powder to China customers.</i>
Concentration:	lot specific
Purification:	Affinity purified
Conjugation:	Unconjugated
Storage:	For short term use, store at 2-8°C up to 1 week. For long term storage, store at -20°C in small aliquots to prevent freeze-thaw cycles.
Stability:	Shelf life: one year from despatch.
Predicted Protein Size:	17 kDa
Gene Name:	cyclin-dependent kinase inhibitor 2A
Database Link:	<a href="#">NP_001035744.1</a> <a href="#">Entrez Gene 25163 Rat</a> <a href="#">Q9R0Z3</a>
Background:	Acts as a negative regulator of the proliferation of normal cells by interacting strongly with CDK4 and CDK6. This inhibits their ability to interact with cyclins D and to phosphorylate the retinoblastoma protein (By similarity).
Synonyms:	ARF; CDK4I; CDKN2; CMM2; INK4; INK4a; MLM; MTS-1; MTS1; OTTHUMP00000021148; p14; p14ARF; p16; p16-INK4; p16-INK4a; p16INK4; p16INK4a; p19; p19Arf; TP16



[View online »](#)

## Product images:



Host: Rabbit  
Target Name: Cdkn2a  
Sample Type: Rat Spleen Lysate  
Antibody Dilution: 1.0 $\mu$ g/ml

Host: Rabbit  
Target Name: CDKN2A  
Sample Tissue: Rat Spleen lysates  
Antibody Dilution: 1  $\mu$ g/ml