

Product datasheet for **TA363717**

Tle1 Rabbit Polyclonal Antibody

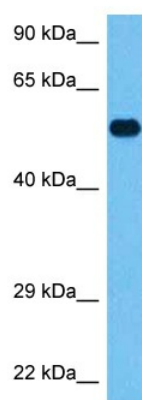
Product data:

Product Type:	Primary Antibodies
Applications:	WB
Reactivity:	Mouse
Host:	Rabbit
Clonality:	Polyclonal
Immunogen:	The immunogen is a synthetic peptide directed towards the middle region of mouse TLE1
Specificity:	Expected reactivity: Mouse
Formulation:	Liquid. Purified antibody supplied in 1x PBS buffer with 0.09% (w/v) sodium azide and 2% sucrose. <i>Note that this product is shipped as lyophilized powder to China customers.</i>
Concentration:	lot specific
Purification:	Affinity purified
Conjugation:	Unconjugated
Storage:	For short term use, store at 2-8°C up to 1 week. For long term storage, store at -20°C in small aliquots to prevent freeze-thaw cycles.
Stability:	Shelf life: one year from despatch.
Predicted Protein Size:	56 kDa
Gene Name:	transducin-like enhancer of split 1
Database Link:	NP_001272459.1 Entrez Gene 21885 Mouse Q62440-4
Background:	Transcriptional corepressor that binds to a number of transcription factors. Inhibits NF-kappa-B-regulated gene expression. Inhibits the transcriptional activation mediated by FOXA2, and by CTNNB1 and TCF family members in Wnt signaling. The effects of full-length TLE family members may be modulated by association with dominant-negative AES. Unusual function as coactivator for ESRRG (By similarity).
Synonyms:	ESG; ESG1; GRG1



[View online »](#)

Product images:



Host: Rabbit
Target Name: Tle1
Sample Type: Mouse Brain Lysate
Antibody Dilution: 1.0 μ g/ml

Host: Rabbit
Target Name: TLE1
Sample Tissue: Mouse Brain lysates
Antibody Dilution: 1 μ g/ml