

## Product datasheet for TA363712

### GJE1 (GJC3) Rabbit Polyclonal Antibody

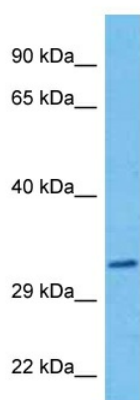
#### Product data:

Product Type:	Primary Antibodies
Applications:	WB
Reactivity:	Human
Host:	Rabbit
Clonality:	Polyclonal
Immunogen:	The immunogen is a synthetic peptide directed towards the middle region of human GJC3
Specificity:	<b>Expected reactivity:</b> Human
Formulation:	Liquid. Purified antibody supplied in 1x PBS buffer with 0.09% (w/v) sodium azide and 2% sucrose. <i>Note that this product is shipped as lyophilized powder to China customers.</i>
Concentration:	lot specific
Purification:	Affinity purified
Conjugation:	Unconjugated
Storage:	For short term use, store at 2-8°C up to 1 week. For long term storage, store at -20°C in small aliquots to prevent freeze-thaw cycles.
Stability:	Shelf life: one year from despatch.
Predicted Protein Size:	30 kDa
Gene Name:	gap junction protein gamma 3
Database Link:	<a href="#">NP_853516.1</a> <a href="#">Entrez Gene 349149 Human</a> <a href="#">Q8NFK1</a>
Background:	This gene encodes a gap junction protein. The encoded protein, also known as a connexin, plays a role in formation of gap junctions, which provide direct connections between neighboring cells. Mutations in this gene have been reported to be associated with nonsyndromic hearing loss.
Synonyms:	Connexin-30.2; Connexin-31.3; Cx29; CX30.2; Cx31.3; GJE1
Protein Families:	Transmembrane



[View online »](#)

## Product images:



Host: Rabbit  
Target Name: GJC3  
Sample Type: THP-1 Cell Lysate  
Antibody Dilution: 1.0 $\mu$ g/ml

Host: Rabbit  
Target Name: GJC3  
Sample Tissue: Human THP-1 Whole Cell lysates  
Antibody Dilution: 1 $\mu$ g/ml