

## Product datasheet for **TA363709**

### Car9 Rabbit Polyclonal Antibody

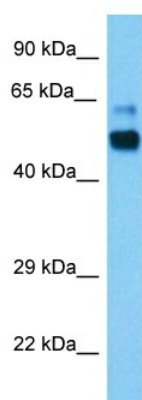
#### Product data:

Product Type:	Primary Antibodies
Applications:	WB
Reactivity:	Mouse
Host:	Rabbit
Clonality:	Polyclonal
Immunogen:	The immunogen is a synthetic peptide directed towards the middle region of mouse CAR9
Specificity:	<b>Expected reactivity:</b> Mouse
Formulation:	Liquid. Purified antibody supplied in 1x PBS buffer with 0.09% (w/v) sodium azide and 2% sucrose.
Concentration:	lot specific
Purification:	Affinity purified
Conjugation:	Unconjugated
Storage:	For short term use, store at 2-8°C up to 1 week. For long term storage, store at -20°C in small aliquots to prevent freeze-thaw cycles.
Stability:	Shelf life: one year from despatch.
Predicted Protein Size:	48 kDa
Gene Name:	carbonic anhydrase 9
Database Link:	<a href="#">NP_647466.2</a> <a href="#">Entrez Gene 230099 Mouse</a> <a href="#">Q8VHB5</a>
Background:	Reversible hydration of carbon dioxide. Participates in pH regulation (By similarity).
Synonyms:	Ca9; CAIX; MN/CA9



[View online »](#)

## Product images:



Host: Rabbit  
Target Name: Car9  
Sample Type: Mouse Stomach Lysate  
Antibody Dilution: 1.0 $\mu$ g/ml

Host: Rabbit  
Target Name: CAR9  
Sample Tissue: Mouse Stomach lysates  
Antibody Dilution: 1ug/ml