

## Product datasheet for **TA363708**

### **TOMM40 Rabbit Polyclonal Antibody**

#### **Product data:**

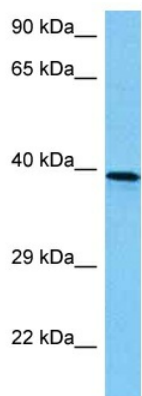
Product Type:	Primary Antibodies
Applications:	WB
Reactivity:	Human
Host:	Rabbit
Clonality:	Polyclonal
Immunogen:	The immunogen is a synthetic peptide directed towards the middle region of human TOMM40
Specificity:	<b>Expected reactivity:</b> Human
Formulation:	Liquid. Purified antibody supplied in 1x PBS buffer with 0.09% (w/v) sodium azide and 2% sucrose. <i>Note that this product is shipped as lyophilized powder to China customers.</i>
Concentration:	lot specific
Purification:	Affinity purified
Conjugation:	Unconjugated
Storage:	For short term use, store at 2-8°C up to 1 week. For long term storage, store at -20°C in small aliquots to prevent freeze-thaw cycles.
Stability:	Shelf life: one year from despatch.
Predicted Protein Size:	39 kDa
Gene Name:	translocase of outer mitochondrial membrane 40
Database Link:	<a href="#">NP_001122388.1</a> <a href="#">Entrez Gene 10452 Human</a> <a href="#">O96008</a>
Background:	The protein encoded by this gene is localized in the outer membrane of the mitochondria. It is the channel-forming subunit of the translocase of the mitochondrial outer membrane (TOM) complex that is essential for import of protein precursors into mitochondria. Alternatively spliced transcript variants have been found for this gene.
Synonyms:	C19orf1; D19S1177E; p38.5; PER-EC1; PEREC1; TOM40
Protein Families:	Druggable Genome, Ion Channels: Other



[View online >](#)

Protein Pathways: Amyotrophic lateral sclerosis (ALS)

### Product images:



Host: Rabbit  
Target Name: TOMM40  
Sample Type: 293T Cell Lysate  
Antibody Dilution: 1.0 $\mu$ g/ml

Host: Rabbit  
Target Name: TOMM40  
Sample Tissue: Human 293T Whole Cell lysates  
Antibody Dilution: 1  $\mu$ g/ml