

Product datasheet for **TA363705**

Cathepsin B (CTSB) Rabbit Polyclonal Antibody

Product data:

Product Type:	Primary Antibodies
Applications:	WB
Reactivity:	Human
Host:	Rabbit
Clonality:	Polyclonal
Immunogen:	The immunogen is a synthetic peptide directed towards the middle region of human CTSB
Specificity:	Expected reactivity: Human
Formulation:	Liquid. Purified antibody supplied in 1x PBS buffer with 0.09% (w/v) sodium azide and 2% sucrose. <i>Note that this product is shipped as lyophilized powder to China customers.</i>
Concentration:	lot specific
Purification:	Affinity purified
Conjugation:	Unconjugated
Storage:	For short term use, store at 2-8°C up to 1 week. For long term storage, store at -20°C in small aliquots to prevent freeze-thaw cycles.
Stability:	Shelf life: one year from despatch.
Predicted Protein Size:	37 kDa
Gene Name:	cathepsin B
Database Link:	NP_001899.1 Entrez Gene 1508 Human P07858



[View online »](#)

Background:

This gene encodes a member of the C1 family of peptidases. Alternative splicing of this gene results in multiple transcript variants. At least one of these variants encodes a preproprotein that is proteolytically processed to generate multiple protein products. These products include the cathepsin B light and heavy chains, which can dimerize to form the double chain form of the enzyme. This enzyme is a lysosomal cysteine protease with both endopeptidase and exopeptidase activity that may play a role in protein turnover. It is also known as amyloid precursor protein secretase and is involved in the proteolytic processing of amyloid precursor protein (APP). Incomplete proteolytic processing of APP has been suggested to be a causative factor in Alzheimer's disease, the most common cause of dementia. Overexpression of the encoded protein has been associated with esophageal adenocarcinoma and other tumors. Multiple pseudogenes of this gene have been identified.

Synonyms:

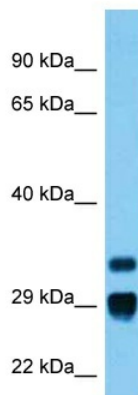
APPS; CPSB

Protein Families:

Druggable Genome, Protease

Protein Pathways:

Antigen processing and presentation, Lysosome

Product images:

Host: Rabbit
Target Name: CTSB
Sample Type: ACHN Cell Lysate
Antibody Dilution: 1.0µg/ml

Host: Rabbit
Target Name: CTSB
Sample Tissue: Human ACHN Whole Cell lysates
Antibody Dilution: 1ug/ml