

Product datasheet for **TA363701**

SKP2 Rabbit Polyclonal Antibody

Product data:

Product Type:	Primary Antibodies
Applications:	WB
Reactivity:	Human
Host:	Rabbit
Clonality:	Polyclonal
Immunogen:	The immunogen is a synthetic peptide directed towards the middle terminal region of human SKP2
Specificity:	Expected reactivity: Human
Formulation:	Liquid. Purified antibody supplied in 1x PBS buffer with 0.09% (w/v) sodium azide and 2% sucrose. <i>Note that this product is shipped as lyophilized powder to China customers.</i>
Concentration:	lot specific
Purification:	Affinity purified
Conjugation:	Unconjugated
Storage:	For short term use, store at 2-8°C up to 1 week. For long term storage, store at -20°C in small aliquots to prevent freeze-thaw cycles.
Stability:	Shelf life: one year from despatch.
Predicted Protein Size:	46 kDa
Gene Name:	S-phase kinase-associated protein 2, E3 ubiquitin protein ligase
Database Link:	NP_001230049.1 Entrez Gene 6502 Human Q13309



[View online »](#)

Background:

This gene encodes a member of the F-box protein family which is characterized by an approximately 40 amino acid motif, the F-box. The F-box proteins constitute one of the four subunits of ubiquitin protein ligase complex called SCFs (SKP1-cullin-F-box), which function in phosphorylation-dependent ubiquitination. The F-box proteins are divided into 3 classes: Fbws containing WD-40 domains, Fbls containing leucine-rich repeats, and Fbxs containing either different protein-protein interaction modules or no recognizable motifs. The protein encoded by this gene belongs to the Fbls class; in addition to an F-box, this protein contains 10 tandem leucine-rich repeats. This protein is an essential element of the cyclin A-CDK2 S-phase kinase. It specifically recognizes phosphorylated cyclin-dependent kinase inhibitor 1B (CDKN1B, also referred to as p27 or KIP1) predominantly in S phase and interacts with S-phase kinase-associated protein 1 (SKP1 or p19). In addition, this gene is established as a protooncogene causally involved in the pathogenesis of lymphomas. Alternative splicing of this gene generates three transcript variants encoding different isoforms.

Synonyms:

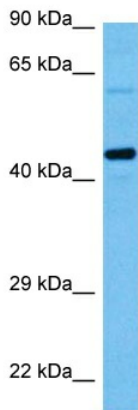
FBL1; FBXL1; FLB1; MGC1366; p45skp2

Protein Families:

Druggable Genome

Protein Pathways:

Acute myeloid leukemia, Apoptosis, Cell cycle, Oocyte meiosis, p53 signaling pathway, Pathways in cancer, Progesterone-mediated oocyte maturation, Small cell lung cancer, Ubiquitin mediated proteolysis

Product images:


Host: Rabbit
 Target Name: SKP2
 Sample Type: PANC1 Cell Lysate
 Antibody Dilution: 1.0µg/ml

Host: Rabbit
 Target Name: SKP2
 Sample Tissue: Human PANC1 Whole Cell lysates
 Antibody Dilution: 1ug/ml