

Product datasheet for **TA363697**

Cux1 Rabbit Polyclonal Antibody

Product data:

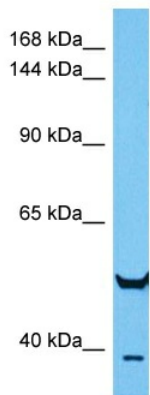
Product Type:	Primary Antibodies
Applications:	WB
Reactivity:	Mouse
Host:	Rabbit
Clonality:	Polyclonal
Immunogen:	The immunogen is a synthetic peptide directed towards the middle region of mouse CUX1
Specificity:	Expected reactivity: Mouse
Formulation:	Liquid. Purified antibody supplied in 1x PBS buffer with 0.09% (w/v) sodium azide and 2% sucrose. <i>Note that this product is shipped as lyophilized powder to China customers.</i>
Concentration:	lot specific
Purification:	Affinity purified
Conjugation:	Unconjugated
Storage:	For short term use, store at 2-8°C up to 1 week. For long term storage, store at -20°C in small aliquots to prevent freeze-thaw cycles.
Stability:	Shelf life: one year from despatch.
Predicted Protein Size:	50 kDa
Gene Name:	cut-like homeobox 1
Database Link:	NP_001278162.1 Entrez Gene 13047 Mouse P53564-5
Background:	Probably has a broad role in mammalian development as a repressor of developmentally regulated gene expression. May act by preventing binding of positively-activating CCAAT factors to promoters. Component of nf-munr repressor; binds to the matrix attachment regions (MARs) (5' and 3') of the immunoglobulin heavy chain enhancer. Represses T-cell receptor (TCR) beta enhancer function by binding to MARbeta, an ATC-rich DNA sequence located upstream of the TCR beta enhancer. Binds to the TH enhancer; may require the basic helix-loop-helix protein TCF4 as a coactivator.



[View online »](#)

Synonyms: CASP; CDP; CDP/Cut; CDP/Cux; CDP1; Clox; COY1; CUT; CUTL1; CUX; Cux/CDP; GOLIM6; Nbla10317; p75; p100; p110; p200

Product images:



Host: Rabbit
 Target Name: Cux1
 Sample Type: Mouse Pancreas Lysate
 Antibody Dilution: 1.0µg/ml

Host: Rabbit
 Target Name: CUX1
 Sample Tissue: Mouse Pancreas lysates
 Antibody Dilution: 1ug/ml