

Product datasheet for **TA363686**

Emc1 Rabbit Polyclonal Antibody

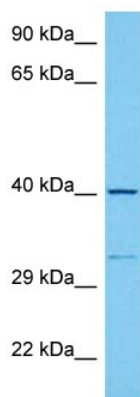
Product data:

Product Type:	Primary Antibodies
Applications:	WB
Reactivity:	Mouse
Host:	Rabbit
Clonality:	Polyclonal
Immunogen:	The immunogen is a synthetic peptide directed towards the middle region of mouse EMC1
Specificity:	Expected reactivity: Mouse
Formulation:	Liquid. Purified antibody supplied in 1x PBS buffer with 0.09% (w/v) sodium azide and 2% sucrose. <i>Note that this product is shipped as lyophilized powder to China customers.</i>
Concentration:	lot specific
Purification:	Affinity purified
Conjugation:	Unconjugated
Storage:	For short term use, store at 2-8°C up to 1 week. For long term storage, store at -20°C in small aliquots to prevent freeze-thaw cycles.
Stability:	Shelf life: one year from despatch.
Predicted Protein Size:	39 kDa
Gene Name:	ER membrane protein complex subunit 1
Database Link:	NP_001034289.1 Entrez Gene 230866 Mouse Q8C7X2-3
Background:	The function of this protein remains unknown.
Synonyms:	2700016F22Rik; C230096C10Rik; Kiaa0090; mKIAA0090; RGD1310427; RP23-371E13.1



[View online »](#)

Product images:



Host: Rabbit
Target Name: Emc1
Sample Type: Mouse Brain Lysate
Antibody Dilution: 1.0µg/ml

Host: Rabbit
Target Name: EMC1
Sample Tissue: Mouse Brain lysates
Antibody Dilution: 1ug/ml