

## Product datasheet for **TA363685**

### Tmod1 Rabbit Polyclonal Antibody

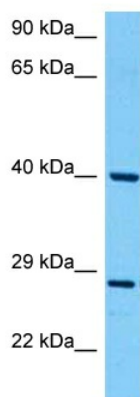
#### Product data:

Product Type:	Primary Antibodies
Applications:	WB
Reactivity:	Mouse
Host:	Rabbit
Clonality:	Polyclonal
Immunogen:	The immunogen is a synthetic peptide directed towards the middle region of mouse TMOD1
Specificity:	<b>Expected reactivity:</b> Mouse
Formulation:	Liquid. Purified antibody supplied in 1x PBS buffer with 0.09% (w/v) sodium azide and 2% sucrose. <i>Note that this product is shipped as lyophilized powder to China customers.</i>
Concentration:	lot specific
Purification:	Affinity purified
Conjugation:	Unconjugated
Storage:	For short term use, store at 2-8°C up to 1 week. For long term storage, store at -20°C in small aliquots to prevent freeze-thaw cycles.
Stability:	Shelf life: one year from despatch.
Predicted Protein Size:	40 kDa
Gene Name:	tropomodulin 1
Database Link:	<a href="#">NP_068683.1</a> <a href="#">Entrez Gene 21916 Mouse P49813</a>
Background:	Blocks the elongation and depolymerization of the actin filaments at the pointed end. The Tmod/TM complex contributes to the formation of the short actin protofilament, which in turn defines the geometry of the membrane skeleton (By similarity).
Synonyms:	D9S57E; E-Tmod; e-tropomodulin; ETMOD; OTTHUMP00000021743; TMOD



[View online »](#)

## Product images:



Host: Rabbit  
Target Name: Tmod1  
Sample Type: Mouse Stomach Lysate  
Antibody Dilution: 1.0 $\mu$ g/ml

Host: Rabbit  
Target Name: TMOD1  
Sample Tissue: Mouse Stomach lysates  
Antibody Dilution: 1 $\mu$ g/ml