

Product datasheet for **TA363680**

Pelo Rabbit Polyclonal Antibody

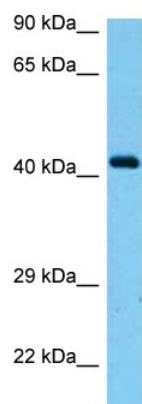
Product data:

Product Type:	Primary Antibodies
Applications:	WB
Reactivity:	Mouse
Host:	Rabbit
Clonality:	Polyclonal
Immunogen:	The immunogen is a synthetic peptide directed towards the middle region of mouse PELO
Specificity:	Expected reactivity: Mouse
Formulation:	Liquid. Purified antibody supplied in 1x PBS buffer with 0.09% (w/v) sodium azide and 2% sucrose. <i>Note that this product is shipped as lyophilized powder to China customers.</i>
Concentration:	lot specific
Purification:	Affinity purified
Conjugation:	Unconjugated
Storage:	For short term use, store at 2-8°C up to 1 week. For long term storage, store at -20°C in small aliquots to prevent freeze-thaw cycles.
Stability:	Shelf life: one year from despatch.
Predicted Protein Size:	43 kDa
Gene Name:	pelota homolog (Drosophila)
Database Link:	NP_598819.2 Entrez Gene 105083 Mouse Q80X73
Background:	Required for normal chromosome segregation during cell division and genomic stability. May function in recognizing stalled ribosomes and triggering endonucleolytic cleavage of the mRNA, a mechanism to release non-functional ribosomes and degrade damaged mRNAs. May have ribonuclease activity (Potential).
Synonyms:	CGI-17; PRO1770



[View online »](#)

Product images:



Host: Rabbit
Target Name: Pelo
Sample Type: Mouse Pancreas Lysate
Antibody Dilution: 1.0 μ g/ml

Host: Rabbit
Target Name: PELO
Sample Tissue: Mouse Pancreas lysates
Antibody Dilution: 1 ug/ml