

## Product datasheet for **TA363679**

### Reck Rabbit Polyclonal Antibody

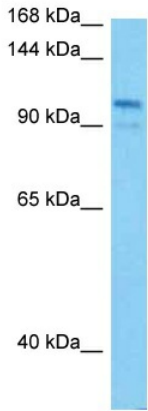
#### Product data:

Product Type:	Primary Antibodies
Applications:	WB
Reactivity:	Mouse
Host:	Rabbit
Clonality:	Polyclonal
Immunogen:	The immunogen is a synthetic peptide directed towards the N terminal region of mouse RECK
Specificity:	<b>Expected reactivity:</b> Mouse
Formulation:	Liquid. Purified antibody supplied in 1x PBS buffer with 0.09% (w/v) sodium azide and 2% sucrose.
Concentration:	lot specific
Purification:	Affinity purified
Conjugation:	Unconjugated
Storage:	For short term use, store at 2-8°C up to 1 week. For long term storage, store at -20°C in small aliquots to prevent freeze-thaw cycles.
Stability:	Shelf life: one year from despatch.
Predicted Protein Size:	106 kDa
Gene Name:	reversion-inducing-cysteine-rich protein with kazal motifs
Database Link:	<a href="#">NP_057887.2</a> <a href="#">Entrez Gene 53614 Mouse</a> <a href="#">Q9Z0J1</a>
Background:	Negatively regulates matrix metalloproteinase-9 (MMP-9) by suppressing MMP-9 secretion and by direct inhibition of its enzymatic activity. RECK down-regulation by oncogenic signals may facilitate tumor invasion and metastasis. Appears to also regulate MMP-2 and MT1-MMP, which are involved in cancer progression (By similarity).
Synonyms:	hRECK; ST15



[View online »](#)

Product images:



Host: Rabbit  
Target Name: Reck  
Sample Type: Mouse Skeletal Muscle Lysate  
Antibody Dilution: 1.0 $\mu$ g/ml

Host: Rabbit  
Target Name: RECK  
Sample Tissue: Mouse Skeletal Muscle lysates  
Antibody Dilution: 1 $\mu$ g/ml