

## Product datasheet for **TA363678**

### Dusp26 Rabbit Polyclonal Antibody

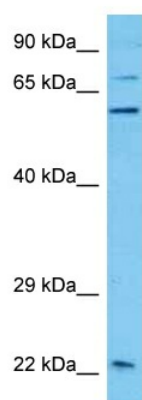
#### Product data:

Product Type:	Primary Antibodies
Applications:	WB
Reactivity:	Mouse
Host:	Rabbit
Clonality:	Polyclonal
Immunogen:	The immunogen is a synthetic peptide directed towards the middle region of mouse DUSP26
Specificity:	<b>Expected reactivity:</b> Mouse
Formulation:	Liquid. Purified antibody supplied in 1x PBS buffer with 0.09% (w/v) sodium azide and 2% sucrose. <i>Note that this product is shipped as lyophilized powder to China customers.</i>
Concentration:	lot specific
Purification:	Affinity purified
Conjugation:	Unconjugated
Storage:	For short term use, store at 2-8°C up to 1 week. For long term storage, store at -20°C in small aliquots to prevent freeze-thaw cycles.
Stability:	Shelf life: one year from despatch.
Predicted Protein Size:	23 kDa
Gene Name:	dual specificity phosphatase 26 (putative)
Database Link:	<a href="#">NP_080145.1</a> <a href="#">Entrez Gene 66959 Mouse</a> <a href="#">Q9D700</a>
Background:	Inactivates MAPK1 and MAPK3 which leads to dephosphorylation of heat shock factor protein 4 and a reduction in its DNA-binding activity.
Synonyms:	DSP-4; DUSP24; LDP-4; LDP4; MGC1136; MGC2627; MKP-8; MKP8; NATA1; SKRP3



[View online »](#)

## Product images:



Host: Rabbit  
Target Name: Dusp26  
Sample Type: Mouse Testis Lysate  
Antibody Dilution: 1.0 $\mu$ g/ml

Host: Rabbit  
Target Name: DUSP26  
Sample Tissue: Mouse Testis lysates  
Antibody Dilution: 1 $\mu$ g/ml