

Product datasheet for **TA363671**

Collagen II (COL2A1) Rabbit Polyclonal Antibody

Product data:

Product Type:	Primary Antibodies
Applications:	WB
Reactivity:	Human
Host:	Rabbit
Clonality:	Polyclonal
Immunogen:	The immunogen is a synthetic peptide directed towards the C terminal region of human COL2A1
Specificity:	Expected reactivity: Human
Formulation:	Liquid. Purified antibody supplied in 1x PBS buffer with 0.09% (w/v) sodium azide and 2% sucrose. <i>Note that this product is shipped as lyophilized powder to China customers.</i>
Concentration:	lot specific
Purification:	Affinity purified
Conjugation:	Unconjugated
Storage:	For short term use, store at 2-8°C up to 1 week. For long term storage, store at -20°C in small aliquots to prevent freeze-thaw cycles.
Stability:	Shelf life: one year from despatch.
Predicted Protein Size:	30 kDa
Gene Name:	collagen type II alpha 1 chain
Database Link:	NP_001835.3 Entrez Gene 1280 Human P02458-3



[View online »](#)

Background:

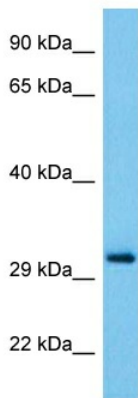
This gene encodes the alpha-1 chain of type II collagen, a fibrillar collagen found in cartilage and the vitreous humor of the eye. Mutations in this gene are associated with achondrogenesis, chondrodysplasia, early onset familial osteoarthritis, SED congenita, Langer-Saldino achondrogenesis, Kniest dysplasia, Stickler syndrome type I, and spondyloepimetaphyseal dysplasia Strudwick type. In addition, defects in processing chondrocalcin, a calcium binding protein that is the C-propeptide of this collagen molecule, are also associated with chondrodysplasia. There are two transcripts identified for this gene.

Synonyms:

ANFH; AOM; chondrocalcin; COL11A3; MGC131516; SEDC

Protein Pathways:

ECM-receptor interaction, Focal adhesion

Product images:

Host: Rabbit
Target Name: COL2A1
Sample Type: MCF7 Cell Lysate
Antibody Dilution: 1.0µg/ml

Host: Rabbit
Target Name: COL2A1
Sample Tissue: Human MCF7 Whole Cell lysates
Antibody Dilution: 1ug/ml