

Product datasheet for **TA363670**

EVI5 Rabbit Polyclonal Antibody

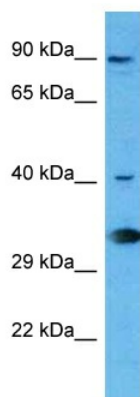
Product data:

Product Type:	Primary Antibodies
Applications:	WB
Reactivity:	Human
Host:	Rabbit
Clonality:	Polyclonal
Immunogen:	The immunogen is a synthetic peptide directed towards the C terminal region of human EVI5
Specificity:	Expected reactivity: Human
Formulation:	Liquid. Purified antibody supplied in 1x PBS buffer with 0.09% (w/v) sodium azide and 2% sucrose. <i>Note that this product is shipped as lyophilized powder to China customers.</i>
Concentration:	lot specific
Purification:	Affinity purified
Conjugation:	Unconjugated
Storage:	For short term use, store at 2-8°C up to 1 week. For long term storage, store at -20°C in small aliquots to prevent freeze-thaw cycles.
Stability:	Shelf life: one year from despatch.
Predicted Protein Size:	89 kDa
Gene Name:	ecotropic viral integration site 5
Database Link:	NP_001295177.1 Entrez Gene 7813 Human O60447
Background:	Functions as a regulator of cell cycle progression by stabilizing the FBXO5 protein and promoting cyclin-A accumulation during interphase. May play a role in cytokinesis.
Synonyms:	EVI-5; NB4S



[View online »](#)

Product images:



Host: Rabbit
Target Name: EVI5
Sample Type: HCT15 Cell Lysate
Antibody Dilution: 1.0 μ g/ml

Host: Rabbit
Target Name: EVI5
Sample Tissue: Human HCT15 Whole Cell lysates
Antibody Dilution: 1 μ g/ml