

Product datasheet for **TA363669**

Lactoperoxidase (LPO) Rabbit Polyclonal Antibody

Product data:

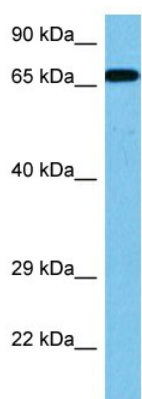
Product Type:	Primary Antibodies
Applications:	WB
Reactivity:	Human
Host:	Rabbit
Clonality:	Polyclonal
Immunogen:	The immunogen is a synthetic peptide directed towards the C terminal region of human LPO
Specificity:	Expected reactivity: Human
Formulation:	Liquid. Purified antibody supplied in 1x PBS buffer with 0.09% (w/v) sodium azide and 2% sucrose. <i>Note that this product is shipped as lyophilized powder to China customers.</i>
Concentration:	lot specific
Purification:	Affinity purified
Conjugation:	Unconjugated
Storage:	For short term use, store at 2-8°C up to 1 week. For long term storage, store at -20°C in small aliquots to prevent freeze-thaw cycles.
Stability:	Shelf life: one year from despatch.
Predicted Protein Size:	71 kDa
Gene Name:	lactoperoxidase
Database Link:	NP_001153574.1 Entrez Gene 4025 Human P22079-2
Background:	This gene encodes a member of the peroxidase family of proteins. The encoded preproprotein is proteolytically processed to generate the mature enzyme. Following its secretion from salivary, mammary, and other mucosal glands, this enzyme catalyzes the generation of the antimicrobial substance hypothiocyanous acid. This gene is present in a gene cluster on chromosome 17. Alternative splicing results in multiple transcript variants, at least one of which encodes a preproprotein that is proteolytically processed.
Synonyms:	lactoperoxidase; MGC129990; MGC129991; SAPX; SPO



[View online »](#)

Protein Families: Druggable Genome, Secreted Protein

Product images:



Host: Rabbit
Target Name: LPO
Sample Type: OVCAR-3 Cell Lysate
Antibody Dilution: 1.0 μ g/ml

Host: Rabbit
Target Name: LPO
Sample Tissue: Human OVCAR-3 Whole Cell lysates
Antibody Dilution: 1 μ g/ml