

Product datasheet for **TA363664**

Relaxin 3 receptor 1 (RXFP3) Rabbit Polyclonal Antibody

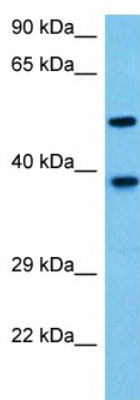
Product data:

Product Type:	Primary Antibodies
Applications:	WB
Reactivity:	Human
Host:	Rabbit
Clonality:	Polyclonal
Immunogen:	The immunogen is a synthetic peptide directed towards the C terminal region of human RXFP3
Specificity:	Expected reactivity: Human
Formulation:	Liquid. Purified antibody supplied in 1x PBS buffer with 0.09% (w/v) sodium azide and 2% sucrose. <i>Note that this product is shipped as lyophilized powder to China customers.</i>
Concentration:	lot specific
Purification:	Affinity purified
Conjugation:	Unconjugated
Storage:	For short term use, store at 2-8°C up to 1 week. For long term storage, store at -20°C in small aliquots to prevent freeze-thaw cycles.
Stability:	Shelf life: one year from despatch.
Predicted Protein Size:	51 kDa
Gene Name:	relaxin/insulin like family peptide receptor 3
Database Link:	NP_057652.1 Entrez Gene 51289 Human Q9NSD7
Background:	Receptor for RNL3/relaxin-3. Binding of the ligand inhibit cAMP accumulation.
Synonyms:	GPCR135; MGC141998; MGC142000; RLN3R1; RXFPR3; SALPR
Protein Families:	Druggable Genome, GPCR, Transmembrane



[View online »](#)

Product images:



Host: Rabbit
Target Name: RXFP3
Sample Type: HT1080 Cell Lysate
Antibody Dilution: 1.0 μ g/ml

Host: Rabbit
Target Name: RXFP3
Sample Tissue: Human HT1080 Whole Cell lysates
Antibody Dilution: 1 μ g/ml