

## Product datasheet for **TA363655**

### **TBL1 (TBL1X) Rabbit Polyclonal Antibody**

#### **Product data:**

Product Type:	Primary Antibodies
Applications:	WB
Reactivity:	Human
Host:	Rabbit
Clonality:	Polyclonal
Immunogen:	The immunogen is a synthetic peptide directed towards the C terminal region of human TBL1X
Specificity:	<b>Expected reactivity:</b> Human
Formulation:	Liquid. Purified antibody supplied in 1x PBS buffer with 0.09% (w/v) sodium azide and 2% sucrose. <i>Note that this product is shipped as lyophilized powder to China customers.</i>
Concentration:	lot specific
Purification:	Affinity purified
Conjugation:	Unconjugated
Storage:	For short term use, store at 2-8°C up to 1 week. For long term storage, store at -20°C in small aliquots to prevent freeze-thaw cycles.
Stability:	Shelf life: one year from despatch.
Predicted Protein Size:	56 kDa
Gene Name:	transducin (beta)-like 1X-linked
Database Link:	<a href="#">NP_001132938.1</a> <a href="#">Entrez Gene 6907 Human</a> <a href="#">Q9BQ87</a>
Background:	F-box-like protein involved in the recruitment of the ubiquitin/19S proteasome complex to nuclear receptor-regulated transcription units. Plays an essential role in transcription activation mediated by nuclear receptors. Probably acts as integral component of corepressor complexes that mediates the recruitment of the 19S proteasome complex, leading to the subsequent proteasomal degradation of transcription repressor complexes, thereby allowing cofactor exchange (By similarity).



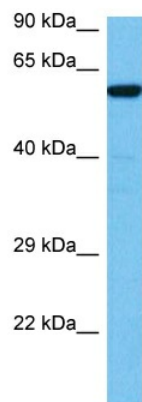
[View online »](#)

Synonyms: 5330429M20; RGD1563868; Tbl1

Protein Families: Transcription Factors

Protein Pathways: Wnt signaling pathway

### Product images:



Host: Rabbit  
Target Name: TBL1X  
Sample Type: HepG2 Cell Lysate  
Antibody Dilution: 1.0µg/ml

Host: Rabbit  
Target Name: TBL1X  
Sample Tissue: Human HepG2 Whole Cell lysates  
Antibody Dilution: 1ug/ml