

## Product datasheet for **TA363650**

### Metabotropic Glutamate Receptor 5 (GRM5) Rabbit Polyclonal Antibody

#### Product data:

Product Type:	Primary Antibodies
Applications:	WB
Reactivity:	Human
Host:	Rabbit
Clonality:	Polyclonal
Immunogen:	The immunogen is a synthetic peptide directed towards the middle region of human GRM5
Specificity:	<b>Expected reactivity:</b> Human
Formulation:	Liquid. Purified antibody supplied in 1x PBS buffer with 0.09% (w/v) sodium azide and 2% sucrose. <i>Note that this product is shipped as lyophilized powder to China customers.</i>
Concentration:	lot specific
Purification:	Affinity purified
Conjugation:	Unconjugated
Storage:	For short term use, store at 2-8°C up to 1 week. For long term storage, store at -20°C in small aliquots to prevent freeze-thaw cycles.
Stability:	Shelf life: one year from despatch.
Predicted Protein Size:	133 kDa
Gene Name:	glutamate metabotropic receptor 5
Database Link:	<a href="#">NP_000833.1</a> <a href="#">Entrez Gene 2915 Human</a> <a href="#">P41594</a>
Background:	This gene encodes a member of the G-protein coupled receptor 3 protein family. The encoded protein is a metabotropic glutamate receptor, whose signaling activates a phosphatidylinositol-calcium second messenger system. This protein may be involved in the regulation of neural network activity and synaptic plasticity. Glutamatergic neurotransmission is involved in most aspects of normal brain function and can be perturbed in many neuropathologic conditions. A pseudogene of this gene has been defined on chromosome 11. Alternative splicing results in multiple transcript variants.



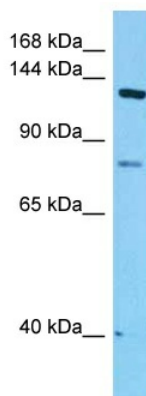
[View online »](#)

**Synonyms:** GPRC1E; mGlu5; MGLUR5; OTTHUMP00000165953; OTTHUMP00000165957

**Protein Families:** Druggable Genome, GPCR, Transmembrane

**Protein Pathways:** Calcium signaling pathway, Gap junction, Huntington's disease, Long-term depression, Long-term potentiation, Neuroactive ligand-receptor interaction

**Product images:**



Host: Rabbit  
Target Name: GRM5  
Sample Type: PC-3 Cell Lysate  
Antibody Dilution: 1.0µg/ml

Host: Rabbit  
Target Name: GRM5  
Sample Tissue: Human PC-3 Whole Cell lysates  
Antibody Dilution: 1ug/ml