

Product datasheet for **TA363648**

UCH37 (UCHL5) Rabbit Polyclonal Antibody

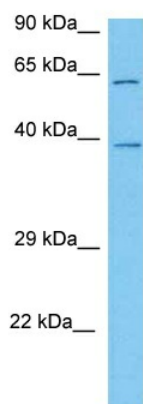
Product data:

Product Type:	Primary Antibodies
Applications:	WB
Reactivity:	Human
Host:	Rabbit
Clonality:	Polyclonal
Immunogen:	The immunogen is a synthetic peptide directed towards the middle region of human UCHL5
Specificity:	Expected reactivity: Human
Formulation:	Liquid. Purified antibody supplied in 1x PBS buffer with 0.09% (w/v) sodium azide and 2% sucrose. <i>Note that this product is shipped as lyophilized powder to China customers.</i>
Concentration:	lot specific
Purification:	Affinity purified
Conjugation:	Unconjugated
Storage:	For short term use, store at 2-8°C up to 1 week. For long term storage, store at -20°C in small aliquots to prevent freeze-thaw cycles.
Stability:	Shelf life: one year from despatch.
Predicted Protein Size:	37 kDa
Gene Name:	ubiquitin C-terminal hydrolase L5
Database Link:	NP_001186190.1 Entrez Gene 51377 Human Q9Y5K5
Background:	Protease that specifically cleaves 'Lys-48'-linked polyubiquitin chains. Deubiquitinating enzyme associated with the 19S regulatory subunit of the 26S proteasome. Putative regulatory component of the INO80 complex; however is inactive in the INO80 complex and is activated by a transient interaction of the INO80 complex with the proteasome via ADRM1.
Synonyms:	CGI-70; INO80R; UCH-L5; UCH37
Protein Families:	Druggable Genome, Protease



[View online »](#)

Product images:



Host: Rabbit
Target Name: UCHL5
Sample Type: RPMI 8226 Cell Lysate
Antibody Dilution: 1.0 μ g/ml

Host: Rabbit
Target Name: UCHL5
Sample Tissue: Human RPMI 8226 Whole Cell lysates
Antibody Dilution: 1 μ g/ml