

Product datasheet for **TA363647**

ANKRD28 Rabbit Polyclonal Antibody

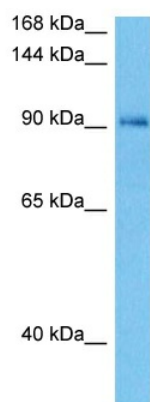
Product data:

Product Type:	Primary Antibodies
Applications:	WB
Reactivity:	Human
Host:	Rabbit
Clonality:	Polyclonal
Immunogen:	The immunogen is a synthetic peptide directed towards the middle region of human ANKRD28
Specificity:	Expected reactivity: Human
Formulation:	Liquid. Purified antibody supplied in 1x PBS buffer with 0.09% (w/v) sodium azide and 2% sucrose.
Concentration:	lot specific
Purification:	Affinity purified
Conjugation:	Unconjugated
Storage:	For short term use, store at 2-8°C up to 1 week. For long term storage, store at -20°C in small aliquots to prevent freeze-thaw cycles.
Stability:	Shelf life: one year from despatch.
Predicted Protein Size:	96 kDa
Gene Name:	ankyrin repeat domain 28
Database Link:	NP_001182027.1 Entrez Gene 23243 Human Q15084-2
Background:	Putative regulatory subunit of protein phosphatase 6 (PP6) that may be involved in the recognition of phosphoprotein substrates. Involved in the PP6-mediated dephosphorylation of NFKBIE opposing its degradation in response to TNF-alpha. Selectively inhibits the phosphatase activity of PPP1C. Targets PPP1C to modulate HNRPK phosphorylation.
Synonyms:	KIAA0379; OTTHUMP00000207863; PITK; PP6-ARS-A



[View online »](#)

Product images:



Host: Rabbit
Target Name: ANKRD28
Sample Type: 293T Cell Lysate
Antibody Dilution: 1.0µg/ml

Host: Rabbit
Target Name: ANKRD28
Sample Tissue: Human 293T Whole Cell lysates
Antibody Dilution: 1ug/ml