

Product datasheet for **TA363642**

Cytohesin 3 (CYTH3) Rabbit Polyclonal Antibody

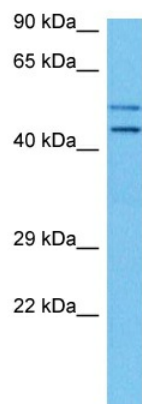
Product data:

Product Type:	Primary Antibodies
Applications:	WB
Reactivity:	Human
Host:	Rabbit
Clonality:	Polyclonal
Immunogen:	The immunogen is a synthetic peptide directed towards the N terminal region of human CYTH3
Specificity:	Expected reactivity: Human
Formulation:	Liquid. Purified antibody supplied in 1x PBS buffer with 0.09% (w/v) sodium azide and 2% sucrose. <i>Note that this product is shipped as lyophilized powder to China customers.</i>
Concentration:	lot specific
Purification:	Affinity purified
Conjugation:	Unconjugated
Storage:	For short term use, store at 2-8°C up to 1 week. For long term storage, store at -20°C in small aliquots to prevent freeze-thaw cycles.
Stability:	Shelf life: one year from despatch.
Predicted Protein Size:	46 kDa
Gene Name:	cytohesin 3
Database Link:	NP_004218.1 Entrez Gene 9265 Human O43739
Background:	Promotes guanine-nucleotide exchange on ARF1 and ARF6. Promotes the activation of ARF factors through replacement of GDP with GTP. Play a role in the epithelial polarization (By similarity).
Synonyms:	ARNO3; GRP1; PSCD3
Protein Families:	Druggable Genome



[View online »](#)

Product images:



Host: Rabbit
Target Name: CYTH3
Sample Type: HepG2 Cell Lysate
Antibody Dilution: 1.0 μ g/ml

Host: Rabbit
Target Name: CYTH3
Sample Tissue: Human HepG2 Whole Cell lysates
Antibody Dilution: 1 μ g/ml