

Product datasheet for **TA363641**

MAD2L1 binding protein (MAD2L1BP) Rabbit Polyclonal Antibody

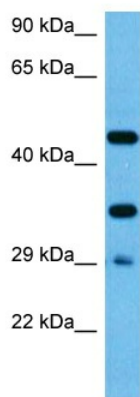
Product data:

Product Type:	Primary Antibodies
Applications:	WB
Reactivity:	Human
Host:	Rabbit
Clonality:	Polyclonal
Immunogen:	The immunogen is a synthetic peptide directed towards the middle region of human MAD2L1BP
Specificity:	Expected reactivity: Human
Formulation:	Liquid. Purified antibody supplied in 1x PBS buffer with 0.09% (w/v) sodium azide and 2% sucrose. <i>Note that this product is shipped as lyophilized powder to China customers.</i>
Concentration:	lot specific
Purification:	Affinity purified
Conjugation:	Unconjugated
Storage:	For short term use, store at 2-8°C up to 1 week. For long term storage, store at -20°C in small aliquots to prevent freeze-thaw cycles.
Stability:	Shelf life: one year from despatch.
Predicted Protein Size:	31 kDa
Gene Name:	MAD2L1 binding protein
Database Link:	NP_001003690.1 Entrez Gene 9587 Human Q15013
Background:	May function to silence the spindle checkpoint and allow mitosis to proceed through anaphase by binding MAD2L1 after it has become dissociated from the MAD2L1-CDC20 complex.
Synonyms:	CMT2; dj261G23.1; KIAA0110; MGC11282; RP1-261G23.6
Protein Families:	Druggable Genome



[View online »](#)

Product images:



Host: Rabbit
Target Name: MAD2L1BP
Sample Type: 786-0 Cell Lysate
Antibody Dilution: 1.0 μ g/ml

Host: Rabbit
Target Name: MAD2L1BP
Sample Tissue: Human 786-0 Whole Cell lysates
Antibody Dilution: 1 μ g/ml