

Product datasheet for **TA363638**

ARHGEF7 Rabbit Polyclonal Antibody

Product data:

Product Type:	Primary Antibodies
Applications:	WB
Reactivity:	Human
Host:	Rabbit
Clonality:	Polyclonal
Immunogen:	The immunogen is a synthetic peptide directed towards the middle region of human ARHGEF7
Specificity:	Expected reactivity: Human
Formulation:	Liquid. Purified antibody supplied in 1x PBS buffer with 0.09% (w/v) sodium azide and 2% sucrose. <i>Note that this product is shipped as lyophilized powder to China customers.</i>
Concentration:	lot specific
Purification:	Affinity purified
Conjugation:	Unconjugated
Storage:	For short term use, store at 2-8°C up to 1 week. For long term storage, store at -20°C in small aliquots to prevent freeze-thaw cycles.
Stability:	Shelf life: one year from despatch.
Predicted Protein Size:	82 kDa
Gene Name:	Rho guanine nucleotide exchange factor 7
Database Link:	NP_001106983.1 Entrez Gene 8874 Human Q14155-2
Background:	This gene encodes a protein that belongs to a family of cytoplasmic proteins that activate the Ras-like family of Rho proteins by exchanging bound GDP for GTP. It forms a complex with the small GTP binding protein Rac1 and recruits Rac1 to membrane ruffles and to focal adhesions. Multiple alternatively spliced transcript variants encoding different isoforms have been observed for this gene.

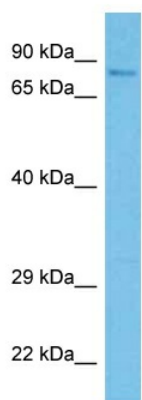


[View online »](#)

Synonyms: BETA-PIX; COOL-1; COOL1; DKFZp686C12170; DKFZp761K1021; KIAA0142; KIAA0412; Nbla10314; P50; P50BP; p85; P85COOL1; P85SPR; PAK3; PAK3BP; PIXB

Protein Pathways: Regulation of actin cytoskeleton

Product images:



Host: Rabbit
 Target Name: ARHGEF7
 Sample Type: 293T Cell Lysate
 Antibody Dilution: 1.0µg/ml

Host: Rabbit
 Target Name: ARHGEF7
 Sample Tissue: Human 293T Whole Cell lysates
 Antibody Dilution: 1ug/ml