

Product datasheet for **TA363629**

KRI1 Rabbit Polyclonal Antibody

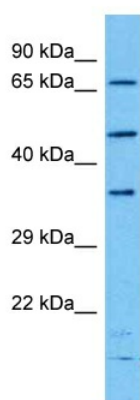
Product data:

Product Type:	Primary Antibodies
Applications:	WB
Reactivity:	Human
Host:	Rabbit
Clonality:	Polyclonal
Immunogen:	The immunogen is a synthetic peptide directed towards the C terminal region of human KRI1
Specificity:	Expected reactivity: Human
Formulation:	Liquid. Purified antibody supplied in 1x PBS buffer with 0.09% (w/v) sodium azide and 2% sucrose.
Concentration:	lot specific
Purification:	Affinity purified
Conjugation:	Unconjugated
Storage:	For short term use, store at 2-8°C up to 1 week. For long term storage, store at -20°C in small aliquots to prevent freeze-thaw cycles.
Stability:	Shelf life: one year from despatch.
Predicted Protein Size:	77 kDa
Gene Name:	KRI1 homolog
Database Link:	NP_075384.3 Entrez Gene 65095 Human Q8N9T8
Background:	This gene overlaps with the gene for cysteine endopeptidase AUT-like 4 in a head-to-tail orientation.
Synonyms:	FLJ12949



[View online »](#)

Product images:



Host: Rabbit
Target Name: KRI1
Sample Type: OVCAR-3 Cell Lysate
Antibody Dilution: 1.0µg/ml

Host: Rabbit
Target Name: KRI1
Sample Tissue: Human OVCAR-3 Whole Cell lysates
Antibody Dilution: 1ug/ml