

Product datasheet for **TA363624**

IQ motif containing B1 (IQCB1) Rabbit Polyclonal Antibody

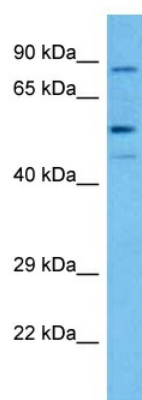
Product data:

Product Type:	Primary Antibodies
Applications:	WB
Reactivity:	Human
Host:	Rabbit
Clonality:	Polyclonal
Immunogen:	The immunogen is a synthetic peptide directed towards the middle region of human IQCB1
Specificity:	Expected reactivity: Human
Formulation:	Liquid. Purified antibody supplied in 1x PBS buffer with 0.09% (w/v) sodium azide and 2% sucrose.
Concentration:	lot specific
Purification:	Affinity purified
Conjugation:	Unconjugated
Storage:	For short term use, store at 2-8°C up to 1 week. For long term storage, store at -20°C in small aliquots to prevent freeze-thaw cycles.
Stability:	Shelf life: one year from despatch.
Predicted Protein Size:	51 kDa
Gene Name:	IQ motif containing B1
Database Link:	NP_001018864.2 Entrez Gene 9657 Human Q15051-2
Background:	This gene encodes a nephrocystin protein that interacts with calmodulin and the retinitis pigmentosa GTPase regulator protein. The encoded protein has a central coiled-coil region and two calmodulin-binding IQ domains. It is localized to the primary cilia of renal epithelial cells and connecting cilia of photoreceptor cells. The protein is thought to play a role in ciliary function. Defects in this gene result in Senior-Loken syndrome type 5. Alternative splicing results in multiple transcript variants. A pseudogene of this gene is found on chromosome 6.
Synonyms:	KIAA0036; Nephrocystin-5; NPHP5; PIQ; SLSN5



[View online »](#)

Product images:



Host: Rabbit
Target Name: IQCB1
Sample Type: A549 Cell Lysate
Antibody Dilution: 1.0µg/ml

Host: Rabbit
Target Name: IQCB1
Sample Tissue: Human A549 Whole Cell lysates
Antibody Dilution: 1ug/ml