

Product datasheet for **TA363622**

LINS (LINS1) Rabbit Polyclonal Antibody

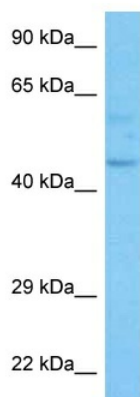
Product data:

Product Type:	Primary Antibodies
Applications:	WB
Reactivity:	Human
Host:	Rabbit
Clonality:	Polyclonal
Immunogen:	The immunogen is a synthetic peptide directed towards the middle region of human LINS1
Specificity:	Expected reactivity: Human
Formulation:	Liquid. Purified antibody supplied in 1x PBS buffer with 0.09% (w/v) sodium azide and 2% sucrose.
Concentration:	lot specific
Purification:	Affinity purified
Conjugation:	Unconjugated
Storage:	For short term use, store at 2-8°C up to 1 week. For long term storage, store at -20°C in small aliquots to prevent freeze-thaw cycles.
Stability:	Shelf life: one year from despatch.
Predicted Protein Size:	47 kDa
Gene Name:	lines homolog 1
Database Link:	NP_001035706.1 Entrez Gene 55180 Human Q8NG48-2
Background:	The Drosophila segment polarity gene lin encodes a protein, lines, which plays important roles in development of the epidermis and hindgut. This gene encodes a protein containing a lines-like domain. This gene is located on chromosome 15 and clustered with the gene encoding ankyrin repeat and SOCS box-containing protein 7.
Synonyms:	FLJ10583; WINS1



[View online »](#)

Product images:



Host: Rabbit
Target Name: LINS1
Sample Type: Hela Cell Lysate
Antibody Dilution: 1.0µg/ml

Host: Rabbit
Target Name: LINS1
Sample Tissue: Human Hela Whole Cell lysates
Antibody Dilution: 1ug/ml