

Product datasheet for **TA363618**

SPG48 (AP5Z1) Rabbit Polyclonal Antibody

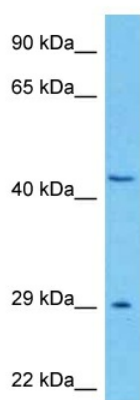
Product data:

Product Type:	Primary Antibodies
Applications:	WB
Reactivity:	Human
Host:	Rabbit
Clonality:	Polyclonal
Immunogen:	The immunogen is a synthetic peptide directed towards the middle region of human AP5Z1
Specificity:	Expected reactivity: Human
Formulation:	Liquid. Purified antibody supplied in 1x PBS buffer with 0.09% (w/v) sodium azide and 2% sucrose. <i>Note that this product is shipped as lyophilized powder to China customers.</i>
Concentration:	lot specific
Purification:	Affinity purified
Conjugation:	Unconjugated
Storage:	For short term use, store at 2-8°C up to 1 week. For long term storage, store at -20°C in small aliquots to prevent freeze-thaw cycles.
Stability:	Shelf life: one year from despatch.
Predicted Protein Size:	49 kDa
Gene Name:	adaptor related protein complex 5 zeta 1 subunit
Database Link:	NP_055670.1 Entrez Gene 9907 Human O43299-3
Background:	This gene was identified by genome-wide screen for genes involved in homologous recombination DNA double-strand break repair (HR-DSBR). The encoded protein was found in a complex with other proteins that have a role in HR-DSBR. Knockdown of this gene reduced homologous recombination, and mutations in this gene were found in patients with spastic paraplegia. It was concluded that this gene likely encodes a helicase.
Synonyms:	KIAA0415; SPG48; zeta



[View online »](#)

Product images:



Host: Rabbit
Target Name: AP5Z1
Sample Type: DLD1 Cell Lysate
Antibody Dilution: 1.0 μ g/ml

Host: Rabbit
Target Name: AP5Z1
Sample Tissue: Human DLD1 Whole Cell lysates
Antibody Dilution: 1 ug/ml