

Product datasheet for **TA363610**

AP2S1 Rabbit Polyclonal Antibody

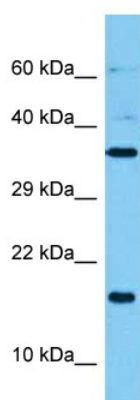
Product data:

Product Type:	Primary Antibodies
Applications:	WB
Reactivity:	Human
Host:	Rabbit
Clonality:	Polyclonal
Immunogen:	The immunogen is a synthetic peptide directed towards the middle terminal region of human AP2S1
Specificity:	Expected reactivity: Human
Formulation:	Liquid. Purified antibody supplied in 1x PBS buffer with 0.09% (w/v) sodium azide and 2% sucrose. <i>Note that this product is shipped as lyophilized powder to China customers.</i>
Concentration:	lot specific
Purification:	Affinity purified
Conjugation:	Unconjugated
Storage:	For short term use, store at 2-8°C up to 1 week. For long term storage, store at -20°C in small aliquots to prevent freeze-thaw cycles.
Stability:	Shelf life: one year from despatch.
Predicted Protein Size:	17 kDa
Gene Name:	adaptor related protein complex 2 sigma 1 subunit
Database Link:	NP_001288005.1 Entrez Gene 1175 Human P53680
Background:	One of two major clathrin-associated adaptor complexes, AP-2, is a heterotetramer which is associated with the plasma membrane. This complex is composed of two large chains, a medium chain, and a small chain. This gene encodes the small chain of this complex. Alternative splicing results in multiple transcript variants.
Synonyms:	AP17; AP17-DELTA; CLAPS2; Sigma2-adaptin
Protein Pathways:	Endocytosis, Huntington's disease



[View online »](#)

Product images:



Host: Rabbit
Target Name: AP2S1
Sample Type: HeLa Cell Lysate
Antibody Dilution: 1.0 μ g/ml

Host: Rabbit
Target Name: AP2S1
Sample Tissue: Human HeLa Whole Cell lysates
Antibody Dilution: 1 μ g/ml