

Product datasheet for **TA363609**

EXOC6B Rabbit Polyclonal Antibody

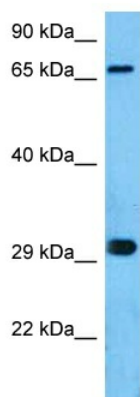
Product data:

Product Type:	Primary Antibodies
Applications:	WB
Reactivity:	Human
Host:	Rabbit
Clonality:	Polyclonal
Immunogen:	The immunogen is a synthetic peptide directed towards the middle terminal region of human EXOC6B
Specificity:	Expected reactivity: Human
Formulation:	Liquid. Purified antibody supplied in 1x PBS buffer with 0.09% (w/v) sodium azide and 2% sucrose. <i>Note that this product is shipped as lyophilized powder to China customers.</i>
Concentration:	lot specific
Purification:	Affinity purified
Conjugation:	Unconjugated
Storage:	For short term use, store at 2-8°C up to 1 week. For long term storage, store at -20°C in small aliquots to prevent freeze-thaw cycles.
Stability:	Shelf life: one year from despatch.
Predicted Protein Size:	73 kDa
Gene Name:	exocyst complex component 6B
Database Link:	NP_056004.1 Entrez Gene 23233 Human Q9Y2D4-2
Background:	This gene encodes a protein which is a part of the evolutionarily conserved exocyst, a multimeric protein complex necessary for exocytosis, which in turn, is crucial for cell growth, polarity and migration. Disruption of this gene may be associated with phenotypes exhibiting multiple symptoms including intellectual disability and developmental delay (DD).
Synonyms:	KIAA0919; SEC15B; SEC15L2; WUGSC:H_NH0343N14.1



[View online »](#)

Product images:



Host: Rabbit
Target Name: EXOC6B
Sample Type: A549 Cell Lysate
Antibody Dilution: 1.0 μ g/ml

Host: Rabbit
Target Name: EXOC6B
Sample Tissue: Human A549 Whole Cell lysates
Antibody Dilution: 1 ug/ml