

Product datasheet for **TA363608**

PRPF31 Rabbit Polyclonal Antibody

Product data:

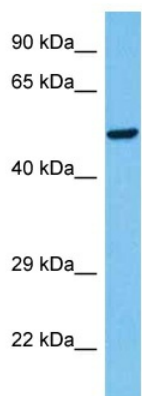
Product Type:	Primary Antibodies
Applications:	WB
Reactivity:	Human
Host:	Rabbit
Clonality:	Polyclonal
Immunogen:	The immunogen is a synthetic peptide directed towards the C terminal region of human PRPF31
Specificity:	Expected reactivity: Human
Formulation:	Liquid. Purified antibody supplied in 1x PBS buffer with 0.09% (w/v) sodium azide and 2% sucrose. <i>Note that this product is shipped as lyophilized powder to China customers.</i>
Concentration:	lot specific
Purification:	Affinity purified
Conjugation:	Unconjugated
Storage:	For short term use, store at 2-8°C up to 1 week. For long term storage, store at -20°C in small aliquots to prevent freeze-thaw cycles.
Stability:	Shelf life: one year from despatch.
Predicted Protein Size:	54 kDa
Gene Name:	pre-mRNA processing factor 31
Database Link:	NP_056444.3 Entrez Gene 26121 Human Q8WWY3
Background:	This gene encodes a component of the spliceosome complex and is one of several retinitis pigmentosa-causing genes. When the gene product is added to the spliceosome complex, activation occurs.
Synonyms:	DKFZp566j153; hPrp31; NY-BR-99; PRP31; RP11
Protein Families:	Druggable Genome



[View online »](#)

Protein Pathways: Spliceosome

Product images:



Host: Rabbit
Target Name: PRPF31
Sample Type: A549 Cell Lysate
Antibody Dilution: 1.0 μ g/ml

Host: Rabbit
Target Name: PRPF31
Sample Tissue: Human A549 Whole Cell lysates
Antibody Dilution: 1 μ g/ml